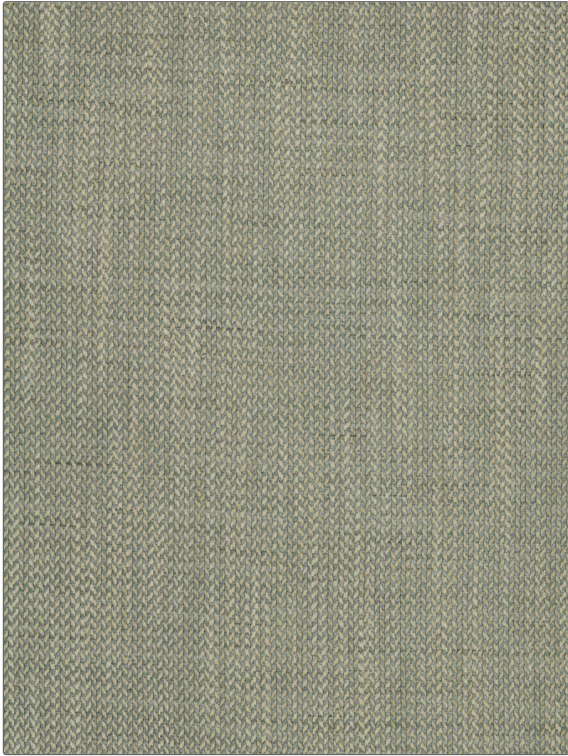


PATTERN Winton
COLOR Haze

| | |
|--------------------------------|--------------------------------|
| BRAND | APPLICATION |
| Fabricut | Fabric |
| USES | CATEGORIES |
| Bedding, Drapery, Multipurpose | Wovens |
| COLORS | DESIGN TYPES |
| Blue | Herringbone, Small Scale Woven |
| SCALE | RAILROADED |
| Small | Not Railroaded |



| | | | |
|----------------------|------------------------|-----------------------------------------------|-----------------------|
| WIDTH | VERTICAL REPEAT | HORIZONTAL REPEAT | CONTENT |
| 54.00 in (137.16 cm) | 0.25 in (0.64 cm) | 0.25 in (0.64 cm) | 100% Polyester |
| BACKING | FIRE CODES | DOUBLE RUBS | PRODUCT NUMBER |
| | UFAC Class I | Exceeds 51,000 Double Rubs (Wyzenbeek Method) | 8621709 |
| COUNTRY | CLEANING CODES | | |
| India | S | | |

ADDITIONAL PRODUCT NOTES

Ca Tb 117-2013