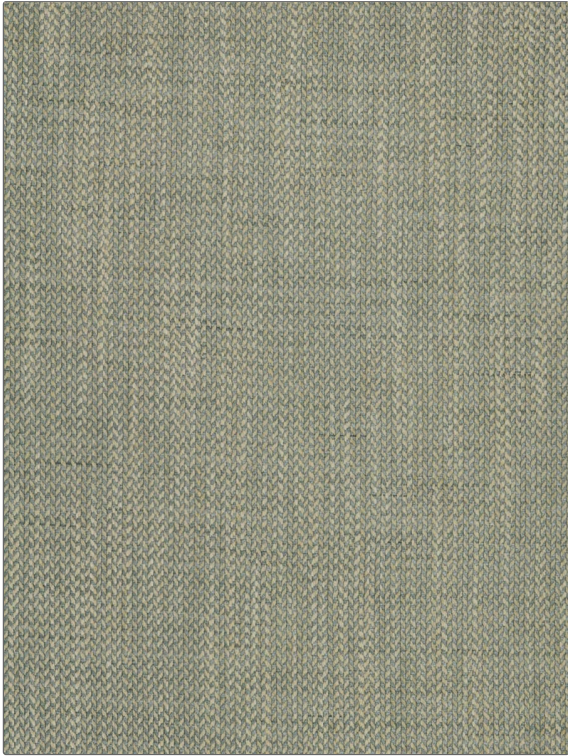


PATTERN **Winton**
COLOR **09**

BRAND	APPLICATION
Fabricut	Fabric
USES	CATEGORIES
Bedding, Drapery, Multipurpose	Wovens
COLORS	DESIGN TYPES
Blue	Herringbone, Small Scale Woven
SCALE	RAILROADED
Small	Not Railroaded



WIDTH	VERTICAL REPEAT	HORIZONTAL REPEAT	CONTENT
54.00 in (137.16 cm)	0.25 in (0.64 cm)	0.25 in (0.64 cm)	100% Polyester
BACKING	FIRE CODES	DOUBLE RUBS	PRODUCT NUMBER
	UFAC Class I	Exceeds 51,000 Double Rubs (Wyzenbeek Method)	8621809
COUNTRY	CLEANING CODES		
India	S		

ADDITIONAL PRODUCT NOTES

Ca Tb 117-2013