

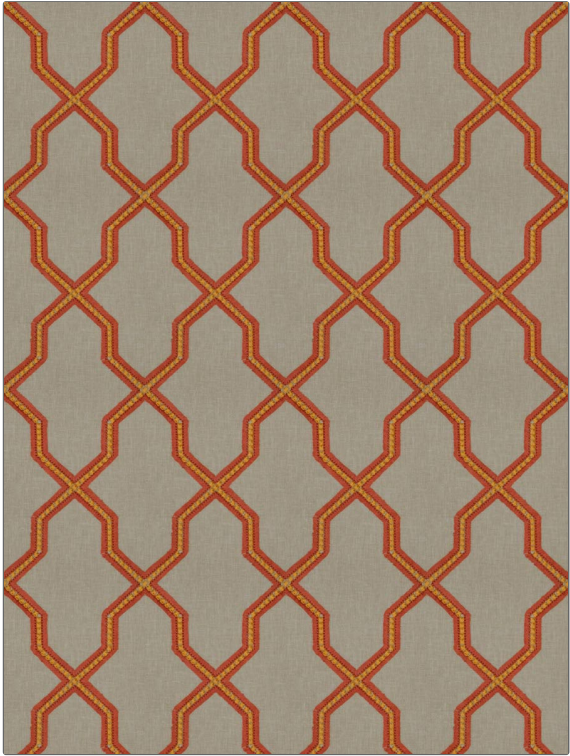
**PATTERN** Crossfade  
**COLOR** Fire

**BRAND**  
Fabricut  
**APPLICATION**  
Fabric

**USES**  
Bedding, Drapery  
**CATEGORIES**  
Crewels / Embroideries

**COLORS**  
Orange / Spice, Coral / Peach  
**DESIGN TYPES**  
Embroidery, Lattice / Fretwork, Novelty, Ogee

**SCALE**  
Medium  
**RAILROADED**  
Not Railroaded



WIDTH	VERTICAL REPEAT	HORIZONTAL REPEAT	CONTENT
51.00 in (129.54 cm)	9.00 in (22.86 cm)	6.75 in (17.14 cm)	Embroidery: 100% Viscose, Base: 60% Polyester, 25% Cotton, 15% Linen
BACKING	PRODUCT NUMBER	COUNTRY	CLEANING CODES
	8661701	India	S

**ADDITIONAL PRODUCT NOTES**

Ca Tb 117-2013, Exclusive Pattern, Embroidered Textiles Are Not, Guaranteed For Precise Color, Matching And Colorfastness., Color Placement Of Embroidery, May Vary. All Measurements, Quoted For Repeats Are, Approximate.