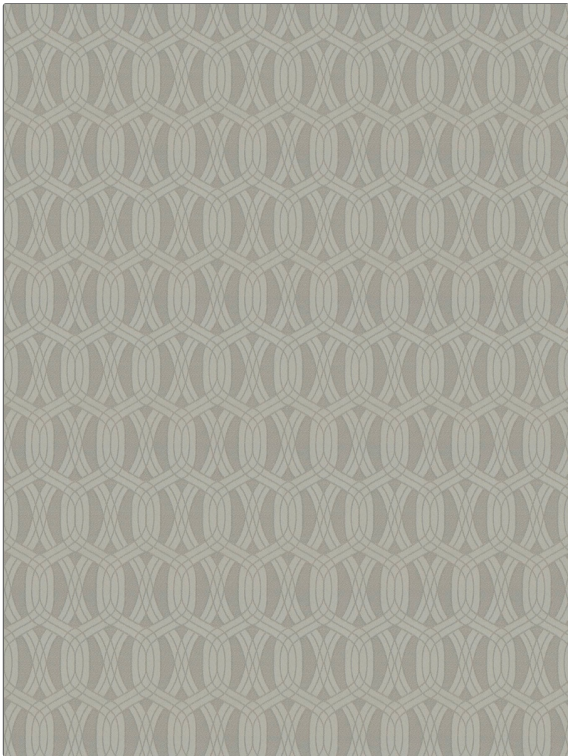


| | |
|---|--------------------|
| PATTERN | Bella Luna |
| COLOR | Platinum |
| BRAND | APPLICATION |
| Fabricut | Fabric |
| USES | CATEGORIES |
| Multipurpose, Upholstery | Wovens |
| BOOK | COLORS |
| Color Studio Vol. IX Sterling | Grey |
| DESIGN TYPES | SCALE |
| Geometric, Jacquard Pattern, Lattice / Fretwork, Contemporary / Modern, Ogee | Medium |
| RAILROADED | |
| Not Railroaded | |



| | | | |
|---------------------------------|--|--------------------------------|--|
| WIDTH | FINISH | VERTICAL REPEAT | HORIZONTAL REPEAT |
| 57.00 in (144.78 cm) | Soil & Stain Repellent Finish | 1.95 in (4.95 cm) | 3.40 in (8.64 cm) |
| CONTENT | BACKING | FIRE CODES | DOUBLE RUBS |
| 78% Polyester, 22% Rayon | | UFAC Class I / NFPA 260 | Exceeds 33,000 Double Rubs (Wyzenbeek Method) |
| PRODUCT NUMBER | DATE BOOKED | COUNTRY | CLEANING CODES |
| 8871502 | 04/2018 | USA | S |

| |
|--|
| ADDITIONAL PRODUCT NOTES |
| Soil & Stain Repellent Finish, Pfas-Free, Ca Tb 117-2013, Exclusive Pattern |