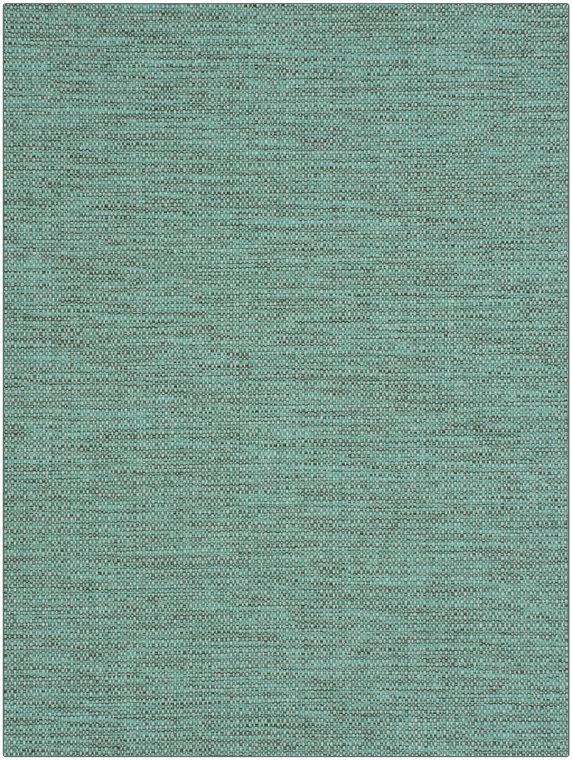


PATTERN Zuma
COLOR 03

BRAND	APPLICATION
Fabricut	Fabric
USES	CATEGORIES
Upholstery	Easy To Clean, Fibreguard, Wovens, Eco / Environment Plus
COLORS	DESIGN TYPES
Aqua / Teal	Texture Plain
RAILROADED	
Not Railroaded	



WIDTH	FINISH	VERTICAL REPEAT	HORIZONTAL REPEAT
55.00 in (139.70 cm)	Fibreguard	0.00 in (0.00 cm)	0.00 in (0.00 cm)
CONTENT	BACKING	FIRE CODES	DOUBLE RUBS
100% Polyester		UFAC Class I / NFPA 260	Exceeds 30,000 Double Rubs (Wyzenbeek Method)
PRODUCT NUMBER	COUNTRY	CLEANING CODES	
9024903	India	WW	

ADDITIONAL PRODUCT NOTES

Fibreguard, Pfas-Free, Easy To Clean Finish, Passes 30,000 Martindale Tst, Oeko Tex Standard 100, Ca Tb 117-2013, Exclusive Pattern, Eco / Environment Plus