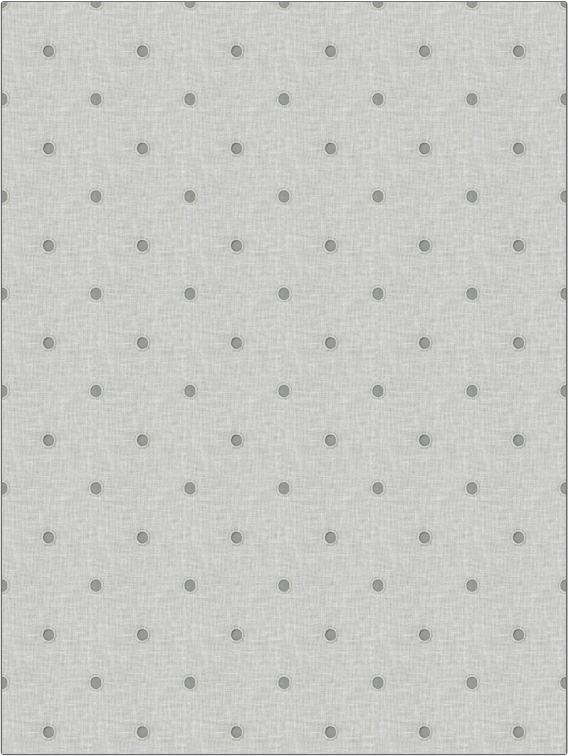


PATTERN	Skarn
COLOR	Winter Frost

BRAND	APPLICATION
Fabricut	Fabric
USES	CATEGORIES
Drapery	Sheer, Crewels / Embroideries
COLORS	DESIGN TYPES
Grey, Metallic, White	Embroidery, Dots / Circles
SCALE	RAILOADED
Medium	Not Railroaded



WIDTH	VERTICAL REPEAT	HORIZONTAL REPEAT	CONTENT
53.00 in (134.62 cm)	4.75 in (12.06 cm)	4.50 in (11.43 cm)	Embroidery: 100% Lurex, Base: 65% Cotton, 35% Polyester
BACKING	PRODUCT NUMBER	COUNTRY	CLEANING CODES
	9073801	India	S

ADDITIONAL PRODUCT NOTES
Embroidered Textiles Are Not, Guaranteed For Precise Color, Matching And Colorfastness., Color Placement Of Embroidery, May Vary. All Measurements, Quoted For Repeats Are, Approximate.