

**PATTERN** Thonis  
**COLOR** 03

**BRAND**  
**Fabricut**

**APPLICATION**  
**Fabric**

**USES**  
**Bedding, Drapery**

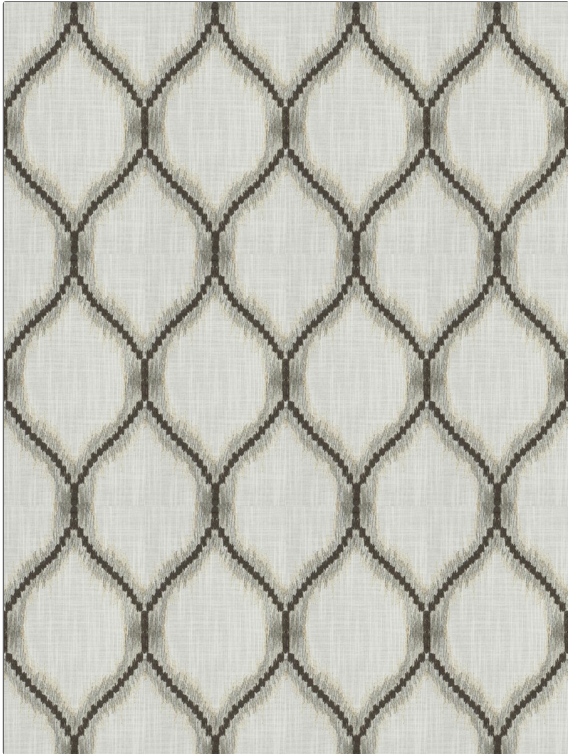
**CATEGORIES**  
**Crewels / Embroideries**

**COLORS**  
**Grey, Taupe / Tan**

**DESIGN TYPES**  
**Embroidery, Ogee**

**SCALE**  
**Large**

**RAILROADED**  
**Not Railroaded**



WIDTH	VERTICAL REPEAT	HORIZONTAL REPEAT	CONTENT
51.00 in (129.54 cm)	12.50 in (31.75 cm)	6.75 in (17.14 cm)	<b>Embroidery: 100% Rayon, Base: 52% Polyester, 48% Cotton</b>
BACKING	PRODUCT NUMBER	COUNTRY	CLEANING CODES
	9085403	India	S

**ADDITIONAL PRODUCT NOTES**

**Embroidered Textiles Are Not, Guaranteed For Precise Color, Matching And Colorfastness., Color Placement Of Embroidery, May Vary. All Measurements, Quoted For Repeats Are, Approximate.**