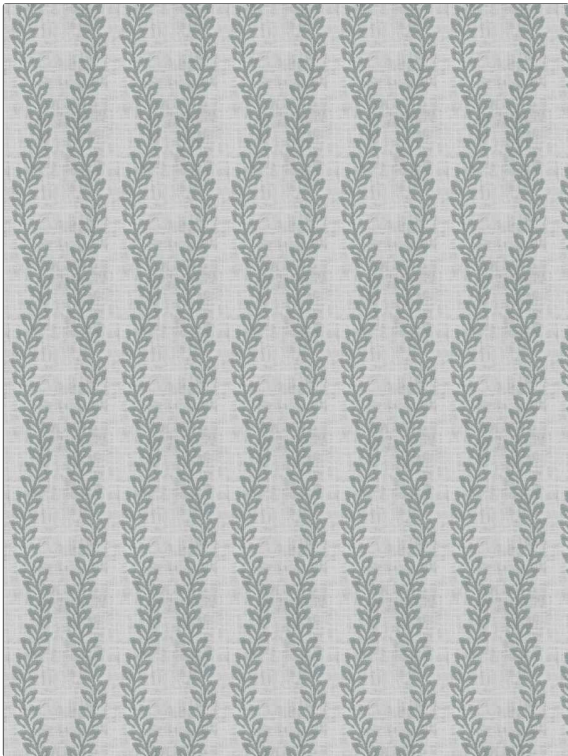


<b>PATTERN</b>	<b>Nature Garnish</b>
<b>COLOR</b>	<b>Hydrangea</b>
<b>BRAND</b>	<b>APPLICATION</b>
<b>Fabricut</b>	<b>Fabric</b>
<b>USES</b>	<b>CATEGORIES</b>
<b>Bedding, Drapery</b>	<b>Crewels / Embroideries, Linen</b>
<b>BOOK</b>	<b>COLORS</b>
<b>Bloom &amp; Lattice (3 Books) Waterlily</b>	<b>Aqua / Teal</b>
<b>DESIGN TYPES</b>	<b>SCALE</b>
<b>Embroidery, Leaves, Ogee</b>	<b>Medium</b>
<b>RAILOADED</b>	
<b>Not Railroaded</b>	



<b>WIDTH</b>	<b>VERTICAL REPEAT</b>	<b>HORIZONTAL REPEAT</b>	<b>CONTENT</b>
<b>52.00 in (132.08 cm)</b>	<b>7.75 in (19.68 cm)</b>	<b>5.25 in (13.34 cm)</b>	<b>Embroidery: 100% Viscose, Base: 55% Linen, 45% Cotton</b>
<b>BACKING</b>	<b>PRODUCT NUMBER</b>	<b>DATE BOOKED</b>	<b>COUNTRY</b>
	<b>9187703</b>	<b>08/2023</b>	<b>China</b>
<b>CLEANING CODES</b>			
<b>S</b>			

**ADDITIONAL PRODUCT NOTES**

**Exclusive Pattern, Embroidered Textiles Are Not, Guaranteed For Precise Color, Matching And Colorfastness., Color Placement Of Embroidery, May Vary. All Measurements, Quoted For Repeats Are, Approximate.**