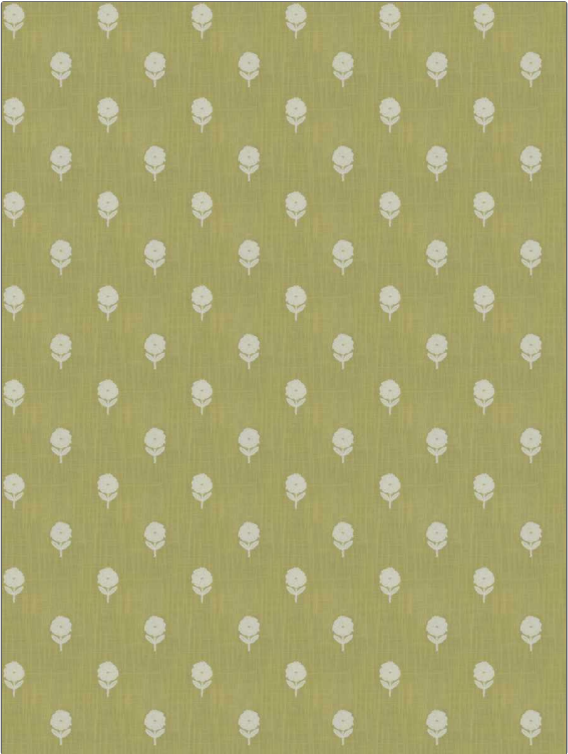


PATTERN	Lovely Bloom
COLOR	06

BRAND	APPLICATION
Fabricut	Fabric
USES	CATEGORIES
Bedding, Drapery	Crewels / Embroideries
COLORS	DESIGN TYPES
Yellow	Embroidery, Floral, Kids
SCALE	RAILROADED
Small	Not Railroaded



WIDTH	VERTICAL REPEAT	HORIZONTAL REPEAT	CONTENT
51.00 in (129.54 cm)	4.75 in (12.06 cm)	4.25 in (10.80 cm)	Embroidery: 100% Cotton, Base: 52% Cotton, 48% Polyester
BACKING	PRODUCT NUMBER	COUNTRY	CLEANING CODES
	9194806	India	S

ADDITIONAL PRODUCT NOTES
Exclusive Pattern, Embroidered Textiles Are Not, Guaranteed For Precise Color, Matching And Colorfastness., Color Placement Of Embroidery, May Vary. All Measurements, Quoted For Repeats Are, Approximate.