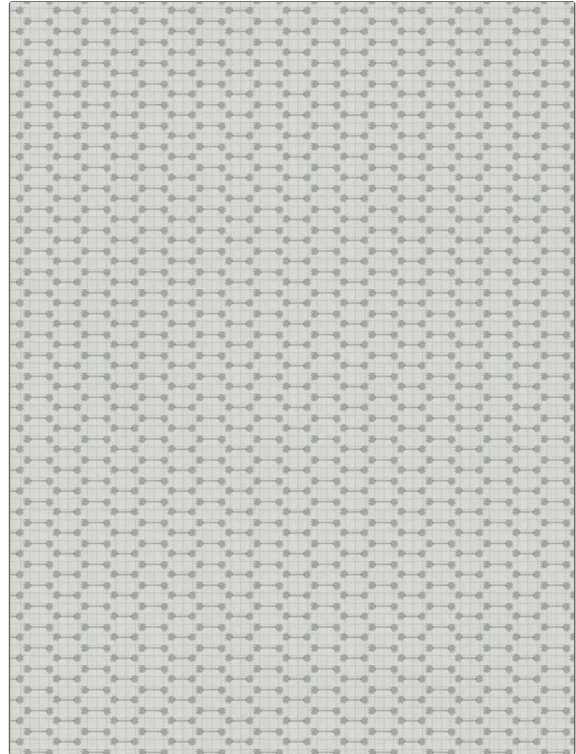


**PATTERN** Troweler  
**COLOR** Water Lily

<b>BRAND</b>	<b>APPLICATION</b>
Fabricut	Fabric
<b>USES</b>	<b>CATEGORIES</b>
Bedding, Drapery	Crewels / Embroideries
<b>BOOK</b>	<b>COLORS</b>
Bloom & Lattice (3 Books) Waterlily	Aqua / Teal
<b>DESIGN TYPES</b>	<b>SCALE</b>
Embroidery, Check / Plaid	Small
<b>RAILOADED</b>	
Not Railroaded	



<b>WIDTH</b>	<b>VERTICAL REPEAT</b>	<b>HORIZONTAL REPEAT</b>	<b>CONTENT</b>
52.00 in (132.08 cm)	1.00 in (2.54 cm)	2.75 in (6.98 cm)	Embroidery: 100% Cotton, Base: 100% Cotton
<b>BACKING</b>	<b>PRODUCT NUMBER</b>	<b>DATE BOOKED</b>	<b>COUNTRY</b>
	9210602	08/2023	India
<b>CLEANING CODES</b>			
S			

**ADDITIONAL PRODUCT NOTES**

Exclusive Pattern, Embroidered Textiles Are Not, Guaranteed For Precise Color, Matching And Colorfastness., Color Placement Of Embroidery, May Vary. All Measurements, Quoted For Repeats Are, Approximate.