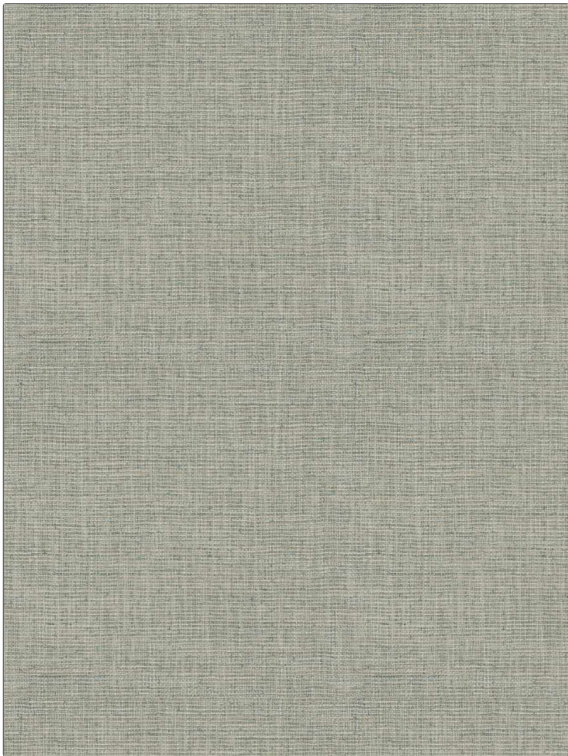


PATTERN Ever Wonder
COLOR Water Lily



BRAND	APPLICATION
Fabricut	Fabric
USES	CATEGORIES
Bedding, Drapery, Multipurpose	Wovens, Solids / Small Scale Patterns
BOOK	COLORS
Bloom & Lattice (3 Books) Waterlily	Aqua / Teal
DESIGN TYPES	RAILROADED
Small Scale Woven, Texture Plain	Not Railroaded

WIDTH	VERTICAL REPEAT	HORIZONTAL REPEAT	CONTENT
54.00 in (137.16 cm)	0.00 in (0.00 cm)	0.00 in (0.00 cm)	100% Polyester
BACKING	FIRE CODES	DOUBLE RUBS	PRODUCT NUMBER
	UFAC Class I / NFPA 260	Exceeds 30,000 Double Rubs (Wyzenbeek Method)	9216601
DATE BOOKED	COUNTRY	CLEANING CODES	
08/2023	India	S	

ADDITIONAL PRODUCT NOTES

Passes 100,000 Martindale Tst, Ca Tb 117-2013, Exclusive Pattern