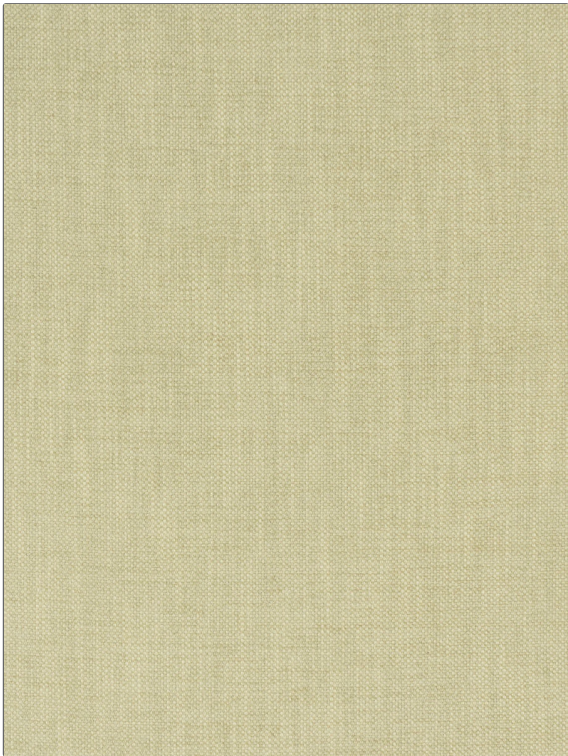


**PATTERN** Zeal  
**COLOR** 27



<b>BRAND</b>	<b>APPLICATION</b>
<b>Fabricut</b>	<b>Fabric</b>
<b>USES</b>	<b>CATEGORIES</b>
<b>Multipurpose, Upholstery</b>	<b>Easy To Clean, Fibreguard, Wovens, Solids / Small Scale Patterns, Chenille</b>
<b>COLORS</b>	<b>DESIGN TYPES</b>
<b>Taupe / Tan, Off White / Ivory</b>	<b>Solid, Texture Plain</b>
<b>RAILROADED</b>	
<b>Not Railroaded</b>	

<b>WIDTH</b>	<b>FINISH</b>	<b>VERTICAL REPEAT</b>	<b>HORIZONTAL REPEAT</b>
<b>55.00 in (139.70 cm)</b>	<b>Fibreguard</b>	<b>0.00 in (0.00 cm)</b>	<b>0.00 in (0.00 cm)</b>
<b>CONTENT</b>	<b>BACKING</b>	<b>FIRE CODES</b>	<b>DOUBLE RUBS</b>
<b>36% Polyester, 32% Cotton, 22% Viscose, 10% Linen</b>	<b>100% Acrylic Backing</b>	<b>UFAC Class I / NFPA 260, Passes MVS 302</b>	<b>Exceeds 110,000 Double Rubs (Wyzenbeek Method)</b>
<b>PRODUCT NUMBER</b>	<b>COUNTRY</b>	<b>CLEANING CODES</b>	
<b>0923827</b>	<b>India</b>	<b>WW</b>	

**ADDITIONAL PRODUCT NOTES**

**Fibreguard, Pfas-Free, Passes 100,000 Martindale Tst, Oeko Tex Standard 100, Iso 14001, Ca Tb 117-2013, 100% Acrylic Backing, Exclusive Pattern, Eco / Environment Plus**