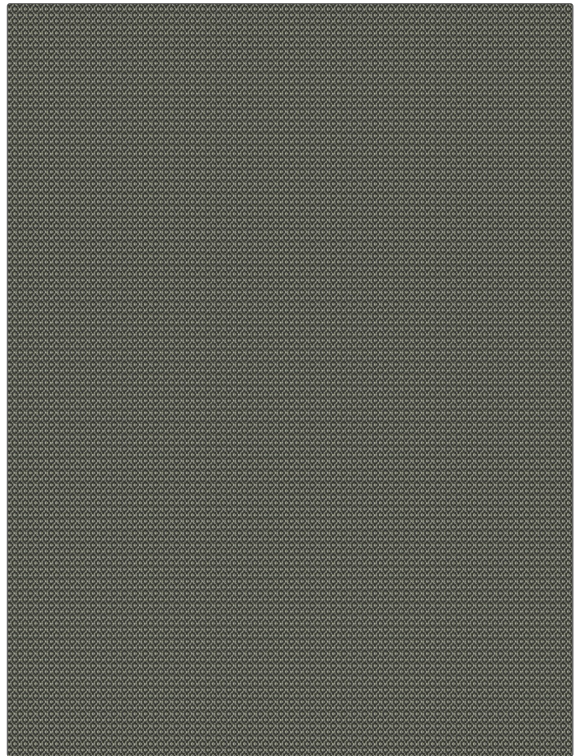


|         |                 |
|---------|-----------------|
| PATTERN | <b>Ashbury</b>  |
| COLOR   | <b>Charcoal</b> |

|  |   |
|--|---|
| BRAND  | APPLICATION   |
| <b>Fabricut</b>  | <b>Fabric</b>   |
| USES   | CATEGORIES  |
| <b>Upholstery</b>  | <b>Easy To Clean, Wovens, Solids / Small Scale Patterns, Eco / Environment Plus</b> |
| BOOK   | COLORS  |
| <b>Chelsea Performance Design</b>                              | <b>Black, Grey</b>  |
| DESIGN TYPES   | SCALE   |
| <b>Geometric, Jacquard Pattern, Small Scale Woven, Diamond</b> | <b>Small</b>  |
| RAILOADED  |   |
| <b>Not Railroaded</b>  |   |



|                                   |                   |  |  |
|-----------------------------------|-------------------|--|--|
| WIDTH                             | FINISH            | VERTICAL REPEAT                                | HORIZONTAL REPEAT                                    |
| <b>56.00 in (142.24 cm)</b>       | <b>Fibreguard</b> | <b>0.60 in (1.52 cm)</b>                       | <b>0.50 in (1.27 cm)</b>                             |
| CONTENT                           | BACKING           | FIRE CODES                                     | DOUBLE RUBS  |
| <b>58% Acrylic, 42% Polyester</b> |                   | <b>UFAC Class I / NFPA 260, Passes MVS 302</b> | <b>Exceeds 50,000 Double Rubs (Wyzenbeek Method)</b> |
| PRODUCT NUMBER                    | DATE BOOKED       | COUNTRY  | CLEANING CODES                                       |
| <b>9385905</b>                    | <b>07/2018</b>    | <b>Turkey</b>                                  | <b>WW</b>  |

|  |
|--|
| ADDITIONAL PRODUCT NOTES   |
| <b>Fibreguard, Pfas-Free, Easy To Clean Finish, Passes 90,000 Martindale Tst, Oeko Tex Standard 100, Ca Tb 117-2013, Exclusive Pattern, Eco / Environment Plus</b> |