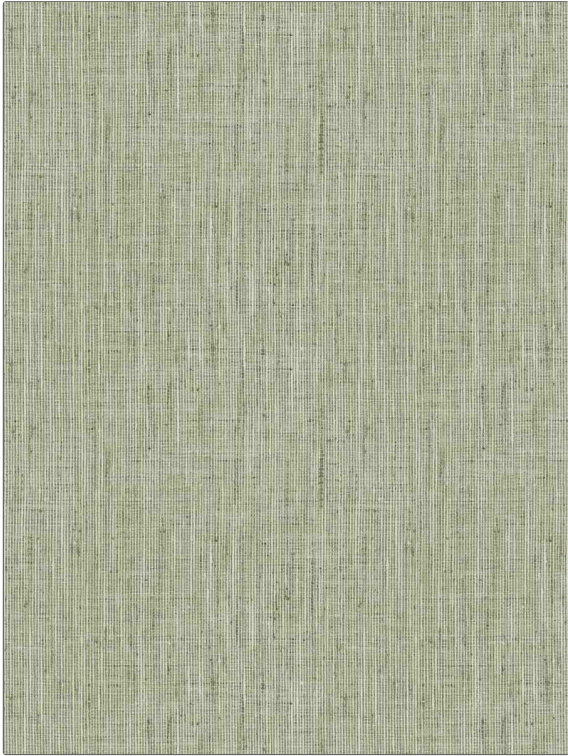


PATTERN	Dykuma
COLOR	Seaglass

BRAND	APPLICATION
Fabricut	Fabric
USES	CATEGORIES
Bedding, Drapery, Multipurpose	Solids / Small Scale Patterns, Faux Silk
BOOK	COLORS
Kalahari Vol. II	Green, Light Green
DESIGN TYPES	RAILROADED
Solid, Texture Plain	Not Railroaded



WIDTH	VERTICAL REPEAT	HORIZONTAL REPEAT	CONTENT
54.00 in (137.16 cm)	0.00 in (0.00 cm)	0.00 in (0.00 cm)	100% Polyester
BACKING	FIRE CODES	DOUBLE RUBS	PRODUCT NUMBER
	UFAC Class I	Exceeds 51,000 Double Rubs (Wyzenbeek Method)	9401006
DATE BOOKED	COUNTRY	CLEANING CODES	
03/2023	India	S	

ADDITIONAL PRODUCT NOTES
Ca Tb 117-2013