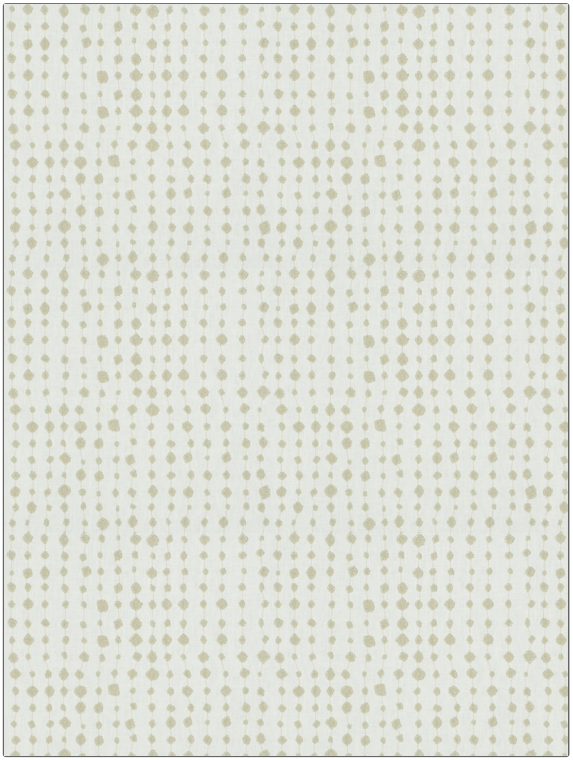


PATTERN Haden Drops
COLOR Twine

BRAND	APPLICATION
Fabricut	Fabric
USES	CATEGORIES
Bedding, Drapery	Crewels / Embroideries
BOOK	COLORS
Natural Nuances (5 Books) Parchment	Linen, White
DESIGN TYPES	SCALE
Embroidery, Contemporary / Modern, Abstract, Dots / Circles	Small
RAILROADED	
Not Railed	



WIDTH	VERTICAL REPEAT	HORIZONTAL REPEAT	CONTENT
51.00 in (129.54 cm)	12.50 in (31.75 cm)	12.75 in (32.38 cm)	Embroidery: 100% Cotton, Base: 52% Polyester, 48% Cotton
BACKING	PRODUCT NUMBER	DATE BOOKED	COUNTRY
	9442302	07/2018	India
CLEANING CODES			
S			

ADDITIONAL PRODUCT NOTES

Embroidered Textiles Are Not, Guaranteed For Precise Color, Matching And Colorfastness., Color Placement Of Embroidery, May Vary. All Measurements, Quoted For Repeats Are, Approximate.