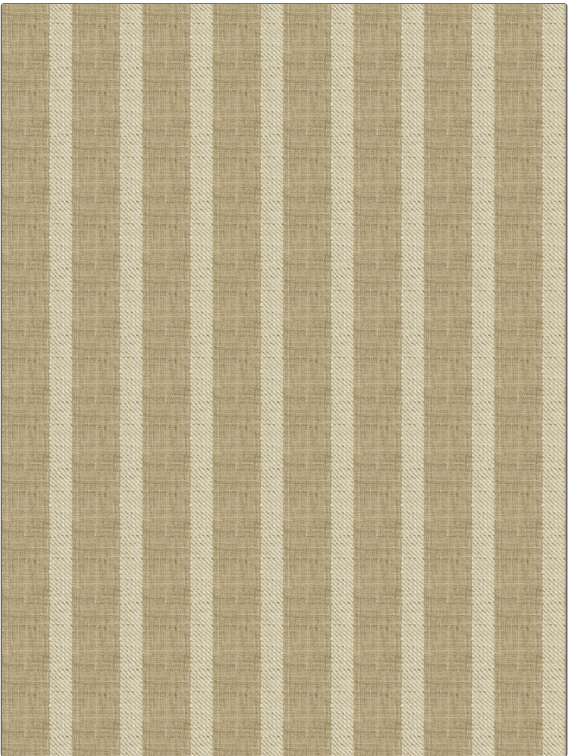


| | |
|---------|-----------------|
| PATTERN | Claymont Stripe |
| COLOR | Burlap |

| | |
|---|-------------|
| BRAND | APPLICATION |
| Fabricut | Fabric |
| USES | CATEGORIES |
| Bedding, Drapery, Multipurpose, Upholstery | Wovens |
| BOOK | COLORS |
| Natural Nuances (5 Books) Sedona | Taupe / Tan |
| DESIGN TYPES | SCALE |
| Stripes | Medium |
| RAILROADED | |
| Not Railroaded | |



| | | | |
|----------------------|-------------------|--|----------------|
| WIDTH | VERTICAL REPEAT | HORIZONTAL REPEAT | CONTENT |
| 54.00 in (137.16 cm) | 0.00 in (0.00 cm) | 3.37 in (8.56 cm) | 100% Polyester |
| BACKING | FIRE CODES | DOUBLE RUBS | PRODUCT NUMBER |
| | UFAC Class I | Exceeds 51,000 Double Rubs (Wyzenbeek Method) | 9444101 |
| DATE BOOKED | COUNTRY | CLEANING CODES | |
| 07/2018 | India | S | |

| |
|--------------------------|
| ADDITIONAL PRODUCT NOTES |
| Ca Tb 117-2013 |