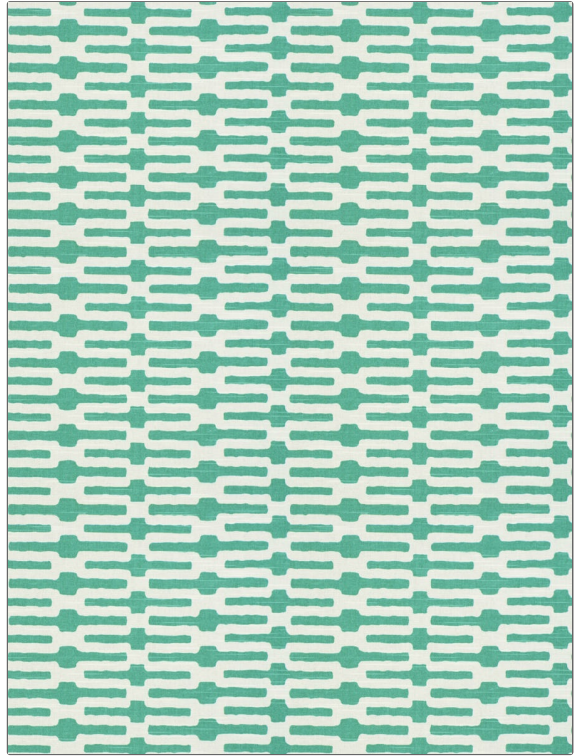


**PATTERN** **Stilts**  
**COLOR** **02**

<b>BRAND</b>	<b>APPLICATION</b>
<b>Fabricut</b>	<b>Fabric</b>
<b>USES</b>	<b>CATEGORIES</b>
<b>Bedding, Drapery, Multipurpose</b>	<b>Prints</b>
<b>COLORS</b>	<b>DESIGN TYPES</b>
<b>Aqua / Teal</b>	<b>Print Pattern, Contemporary / Modern, Abstract</b>
<b>SCALE</b>	<b>RAILROADED</b>
<b>Medium</b>	<b>Not Railroaded</b>



<b>WIDTH</b>	<b>FINISH</b>	<b>VERTICAL REPEAT</b>	<b>HORIZONTAL REPEAT</b>
<b>54.00 in (137.16 cm)</b>	<b>Soil &amp; Stain Repellent Finish</b>	<b>12.75 in (32.38 cm)</b>	<b>13.62 in (34.59 cm)</b>
<b>CONTENT</b>	<b>BACKING</b>	<b>FIRE CODES</b>	<b>DOUBLE RUBS</b>
<b>100% Cotton</b>		<b>UFAC Class I</b>	<b>Exceeds 15,000 Double Rubs (Wyzenbeek Method)</b>
<b>PRODUCT NUMBER</b>	<b>COUNTRY</b>	<b>CLEANING CODES</b>	
<b>9469402</b>	<b>Imported Greige USA</b>	<b>S</b>	

**ADDITIONAL PRODUCT NOTES**

**Soil & Stain Repellent Finish, Ca Tb 117-2013**