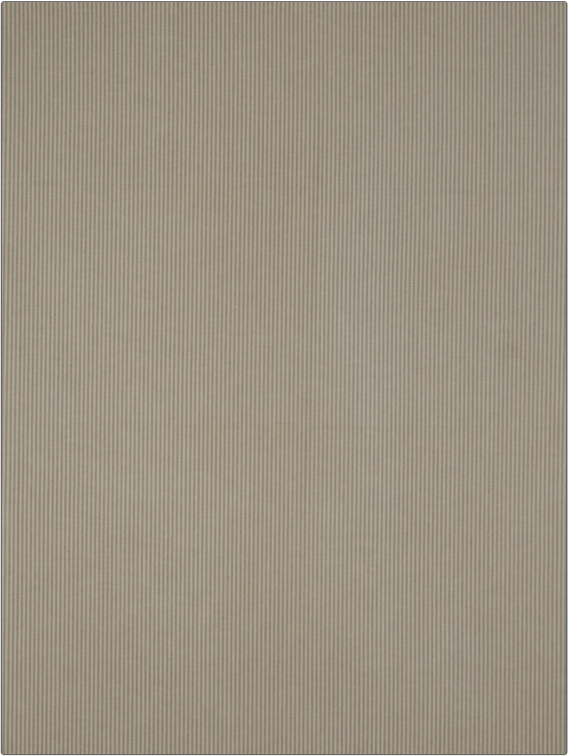


| | |
|---------|-----------------|
| PATTERN | Starting Lineup |
| COLOR | 04 |



| | |
|-----------------------------------|----------------|
| BRAND | APPLICATION |
| Fabricut | Fabric |
| USES | CATEGORIES |
| Bedding, Drapery, Multipurpose | Wovens |
| COLORS | DESIGN TYPES |
| Grey | Stripes |
| SCALE | RAILOADED |
| Small | Not Railroaded |

| | | | |
|----------------------|-------------------|--|----------------|
| WIDTH | VERTICAL REPEAT | HORIZONTAL REPEAT | CONTENT |
| 54.00 in (137.16 cm) | 0.00 in (0.00 cm) | 0.12 in (0.30 cm) | 100% Cotton |
| BACKING | FIRE CODES | DOUBLE RUBS | PRODUCT NUMBER |
| | UFAC Class I | Exceeds 51,000 Double Rubs (Wyzenbeek Method) | 9479004 |
| COUNTRY | CLEANING CODES | | |
| Portugal | S | | |

| |
|--------------------------|
| ADDITIONAL PRODUCT NOTES |
| Ca Tb 117-2013 |