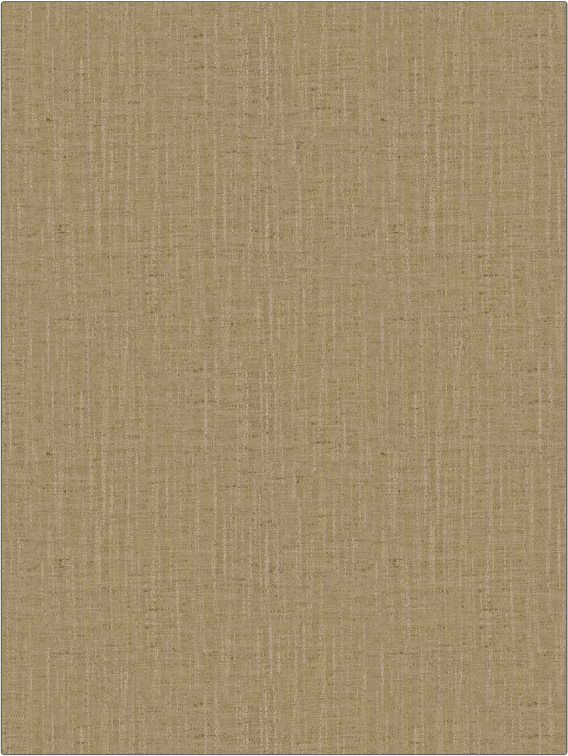


PATTERN	Pyla
COLOR	Camel

BRAND	APPLICATION
Fabricut	Fabric
USES	CATEGORIES
Bedding, Drapery, Multipurpose	Solids / Small Scale Patterns, Faux Silk
BOOK	COLORS
Kalahari Vol. II	Brown, Beige, Gold
DESIGN TYPES	RAILROADED
Solid	Not Railroaded



WIDTH	VERTICAL REPEAT	HORIZONTAL REPEAT	CONTENT
54.00 in (137.16 cm)	0.00 in (0.00 cm)	0.00 in (0.00 cm)	100% Polyester
BACKING	FIRE CODES	DOUBLE RUBS	PRODUCT NUMBER
	Does Not Contain FR Chemicals, UFAC Class I / NFPA 260	Exceeds 100,000 Double Rubs (Wyzenbeek Method)	9487205
DATE BOOKED	COUNTRY	CLEANING CODES	
03/2023	India	S	

ADDITIONAL PRODUCT NOTES
Ca Tb 117-2013