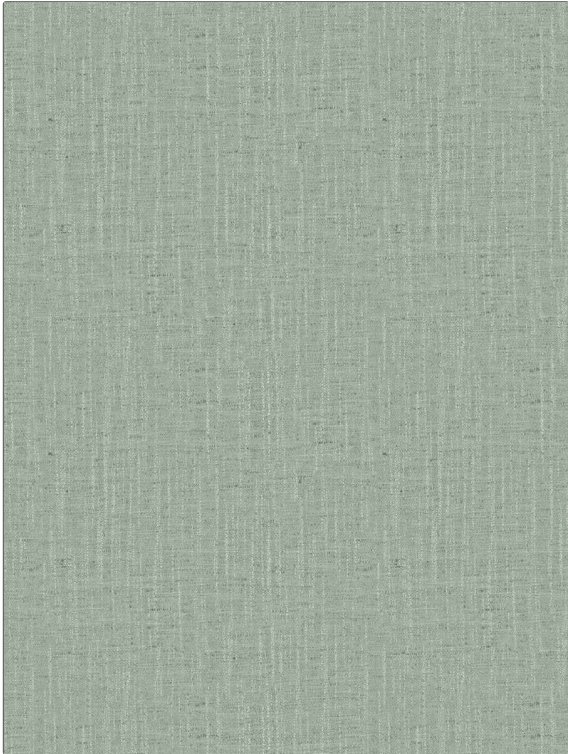


**PATTERN** Pyla  
**COLOR** Splash

<b>BRAND</b>	<b>APPLICATION</b>
Fabricut	Fabric
<b>USES</b>	<b>CATEGORIES</b>
Bedding, Drapery, Multipurpose	Solids / Small Scale Patterns, Faux Silk
<b>BOOK</b>	<b>COLORS</b>
Kalahari Vol. II	Aqua / Teal
<b>DESIGN TYPES</b>	<b>RAILROADED</b>
Solid	Not Railroaded



<b>WIDTH</b>	<b>VERTICAL REPEAT</b>	<b>HORIZONTAL REPEAT</b>	<b>CONTENT</b>
54.00 in (137.16 cm)	0.00 in (0.00 cm)	0.00 in (0.00 cm)	100% Polyester
<b>BACKING</b>	<b>FIRE CODES</b>	<b>DOUBLE RUBS</b>	<b>PRODUCT NUMBER</b>
	Does Not Contain FR Chemicals, UFAC Class I / NFPA 260	Exceeds 100,000 Double Rubs (Wyzenbeek Method)	9487206
<b>DATE BOOKED</b>	<b>COUNTRY</b>	<b>CLEANING CODES</b>	
03/2023	India	S	

**ADDITIONAL PRODUCT NOTES**

Ca Tb 117-2013