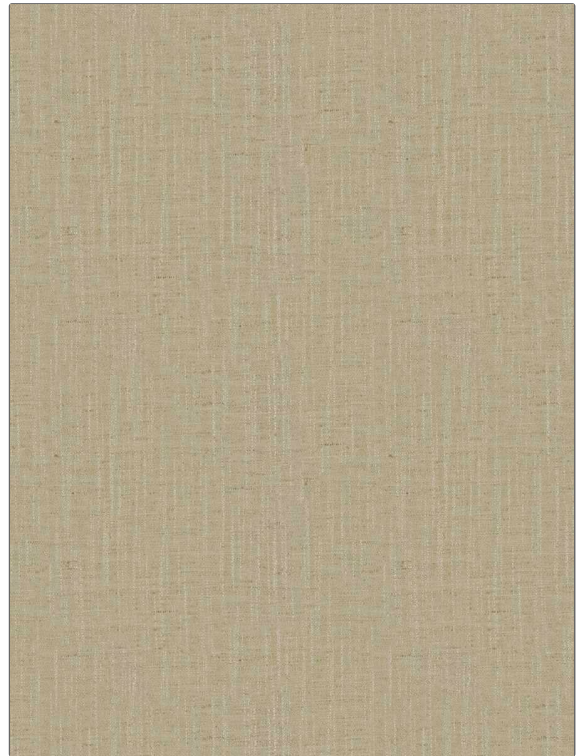


| | |
|----------------|---------------|
| PATTERN | Pyla |
| COLOR | Almond |

| | |
|---------------------------------------|---|
| BRAND | APPLICATION |
| Fabricut | Fabric |
| USES | CATEGORIES |
| Bedding, Drapery, Multipurpose | Solids / Small Scale Patterns, Faux Silk |
| BOOK | COLORS |
| Kalahari Vol. II | Beige |
| DESIGN TYPES | RAILROADED |
| Solid | Not Railroaded |



| | | | |
|-----------------------------|---|---|-----------------------|
| WIDTH | VERTICAL REPEAT | HORIZONTAL REPEAT | CONTENT |
| 54.00 in (137.16 cm) | 0.00 in (0.00 cm) | 0.00 in (0.00 cm) | 100% Polyester |
| BACKING | FIRE CODES | DOUBLE RUBS | PRODUCT NUMBER |
| | Does Not Contain FR Chemicals, UFAC Class I / NFPA 260 | Exceeds 100,000 Double Rubs (Wyzenbeek Method) | 9487210 |
| DATE BOOKED | COUNTRY | CLEANING CODES | |
| 03/2023 | India | S | |

| |
|---------------------------------|
| ADDITIONAL PRODUCT NOTES |
| Ca Tb 117-2013 |