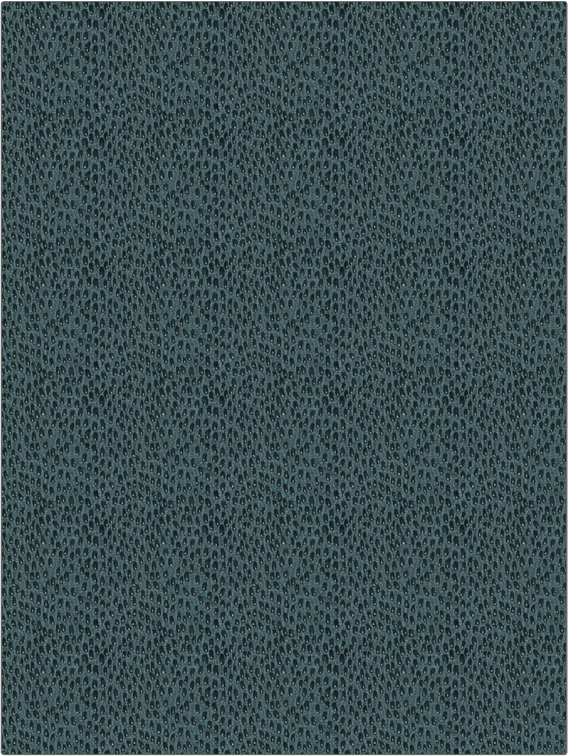


| | |
|---------|---------|
| PATTERN | Rye Dot |
| COLOR | 02 |

| | |
|--------------------------------|--|
| BRAND | APPLICATION |
| Fabricut | Fabric |
| USES | CATEGORIES |
| Bedding, Drapery, Multipurpose | Crewels / Embroideries |
| COLORS | DESIGN TYPES |
| Blue, Metallic | Embroidery, Global / Ethnic, Texture Plain |
| SCALE | RAILROADED |
| Small | Not Railroaded |



| | | | |
|----------------------|--------------------|--------------------|--|
| WIDTH | VERTICAL REPEAT | HORIZONTAL REPEAT | CONTENT |
| 47.00 in (119.38 cm) | 6.25 in (15.88 cm) | 5.75 in (14.60 cm) | Embroidery: 80% Cotton, 20% Zari, Base: 70% Viscose, 30% Linen |
| BACKING | PRODUCT NUMBER | COUNTRY | CLEANING CODES |
| | 0960202 | India | S |

| |
|---|
| ADDITIONAL PRODUCT NOTES |
| Exclusive Pattern, Embroidered Textiles Are Not, Guaranteed For Precise Color, Matching And Colorfastness., Color Placement Of Embroidery, May Vary. All Measurements, Quoted For Repeats Are, Approximate. |