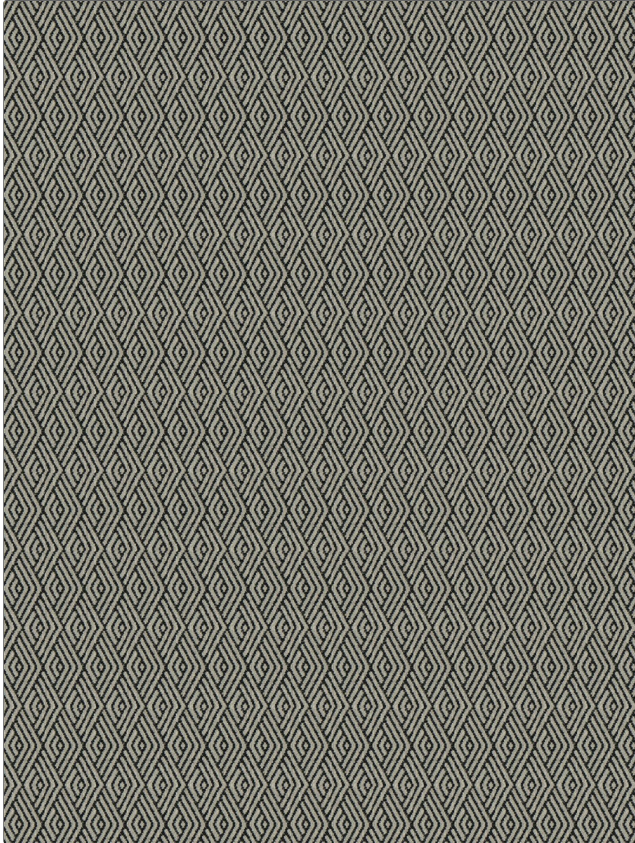


PATTERN **Kanjiro**  
 COLOR **01**

|   |                                 |
|---|---------------------------------|
| BRAND   | APPLICATION                     |
| <b>Fabricut</b>                                   | <b>Fabric</b>                   |
| USES  | CATEGORIES                      |
| <b>Bedding, Drapery, Multipurpose, Upholstery</b> | <b>Wovens</b>                   |
| COLLECTION  | COLORS                          |
| <b>None</b>                                       | <b>Black, Off White / Ivory</b> |
| DESIGN TYPES                                      | SCALE                           |
| <b>Small Scale Woven, Diamond / Ogee</b>          | <b>Small</b>                    |
| RAILOADED   |                                 |
| <b>Not Railed</b>                                 |                                 |



|  |              |                          |   |
|--|--------------|--------------------------|---|
| WIDTH                                      | FINISH       | VERTICAL REPEAT          | HORIZONTAL REPEAT                                     |
| <b>57.00 in (144.78 cm)</b>                | <b>None</b>  | <b>3.50 in (8.89 cm)</b> | <b>1.75 in (4.44 cm)</b>                              |
| CONTENT                                    | BACKING      | FIRE CODES               | DOUBLE RUBS   |
| <b>78% Polyester, 17% Cotton, 5% Linen</b> | <b>None</b>  | <b>None</b>              | <b>Exceeds 100,000 Double Rubs (Wyzenbeek Method)</b> |
| PRODUCT NUMBER                             | COUNTRY      | CLEANING CODES           |   |
| <b>9781301</b>                             | <b>China</b> | <b>S</b>                 |   |