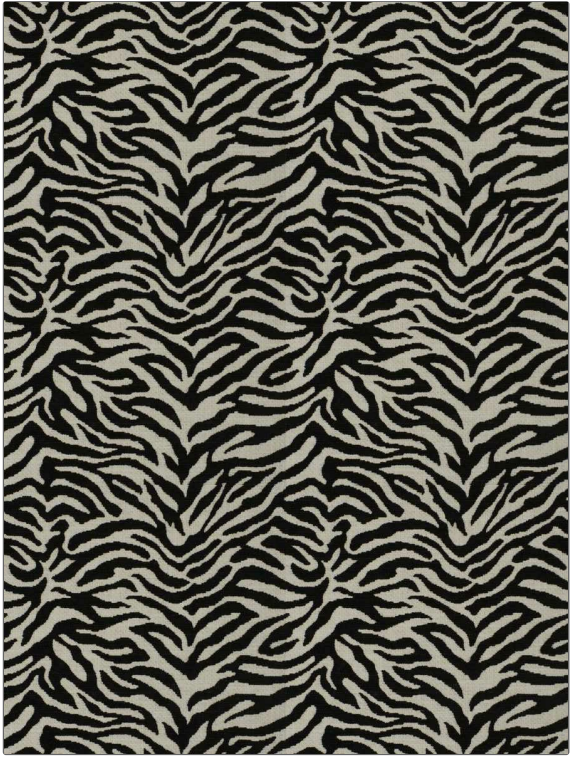


**PATTERN** Zebra Tailed  
**COLOR** 02

|                                   |                     |
|-----------------------------------|---------------------|
| <b>BRAND</b>                      | <b>APPLICATION</b>  |
| Fabricut                          | Fabric              |
| <b>USES</b>                       | <b>CATEGORIES</b>   |
| Bedding, Multipurpose, Upholstery | Wovens, Chenille    |
| <b>COLORS</b>                     | <b>DESIGN TYPES</b> |
| Black                             | Animal Skins        |
| <b>SCALE</b>                      | <b>RAILOADED</b>    |
| Medium                            | Not Railed          |



|                      |                        |   |                           |
|----------------------|------------------------|---|---------------------------|
| <b>WIDTH</b>         | <b>VERTICAL REPEAT</b> | <b>HORIZONTAL REPEAT</b>                      | <b>CONTENT</b>            |
| 54.00 in (137.16 cm) | 13.25 in (33.66 cm)    | 13.50 in (34.29 cm)                           | 80% Polyester, 20% Cotton |
| <b>BACKING</b>       | <b>FIRE CODES</b>      | <b>DOUBLE RUBS</b>                            | <b>PRODUCT NUMBER</b>     |
|                      | UFAC Class I           | Exceeds 51,000 Double Rubs (Wyzenbeek Method) | 9801502                   |
| <b>COUNTRY</b>       | <b>CLEANING CODES</b>  |   |                           |
| China                | S                      |   |                           |

**ADDITIONAL PRODUCT NOTES**

Ca Tb 117-2013