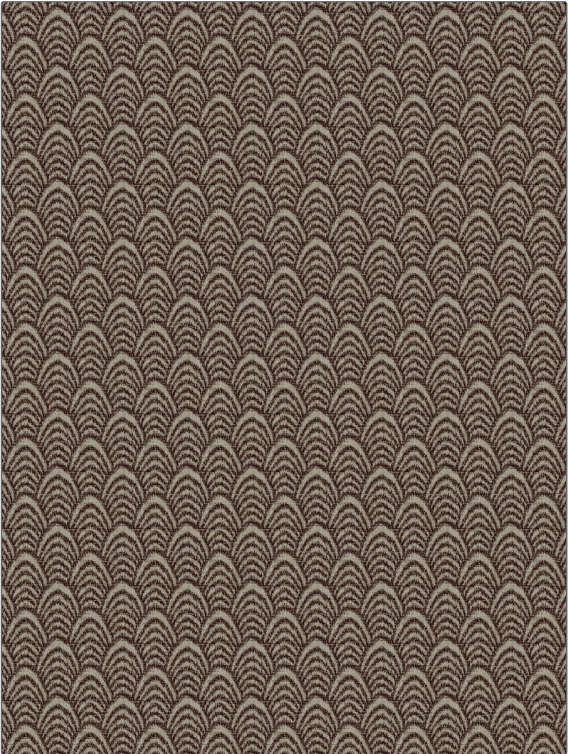


Fabric Product Details

PATTERN Athena Scallop
COLOR Port

BRAND	APPLICATION
S. Harris	Fabric
USES	CATEGORIES
Upholstery	Wovens, Linen
BOOK	COLORS
Revival Spring 2019	Pink
DESIGN TYPES	SCALE
Global / Ethnic, Jacquard Pattern, Novelty, Contemporary / Modern, Bargello	Small
RAILROADED	
Not Railroaded	



WIDTH	VERTICAL REPEAT	HORIZONTAL REPEAT	CONTENT
54.00 in (137.16 cm)	3.50 in (8.89 cm)	3.10 in (7.87 cm)	76% Viscose, 15% Linen, 9% Cotton
BACKING	FIRE CODES	DOUBLE RUBS	PRODUCT NUMBER
	UFAC Class II	Exceeds 30,000 Double Rubs (Wyzenbeek Method)	0117101
DATE BOOKED	COUNTRY	CLEANING CODES	
01/2019	Italy	S	

ADDITIONAL PRODUCT NOTES

Exclusive Pattern