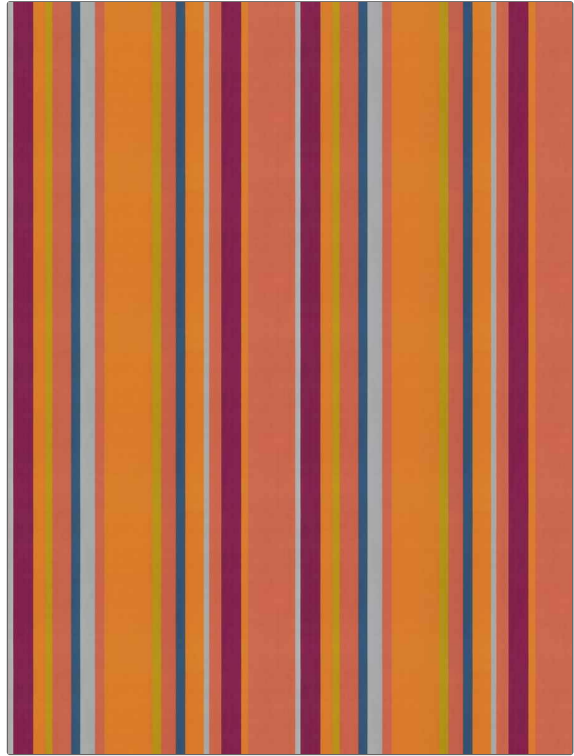


Fabric Product Details

PATTERN	Transit Stripe
COLOR	Pink Moon
BRAND	APPLICATION
S. Harris	Fabric
USES	CATEGORIES
Upholstery	Outdoor, Velvet / Grospoint
BOOK	COLORS
Chroma S24	Blue, Lavender / Purple, Orange / Spice
DESIGN TYPES	SCALE
Stripes	Large
RAILROADED	
Not Railroaded	



WIDTH	FINISH	VERTICAL REPEAT	HORIZONTAL REPEAT
55.00 in (139.70 cm)	Easy To Clean Finish	0.00 in (0.00 cm)	27.50 in (69.85 cm)
CONTENT	BACKING	FIRE CODES	DOUBLE RUBS
100% Polyester	100% Acrylic Backing	UFAC Class I / NFPA 260	Exceeds 51,000 Double Rubs (Wyzenbeek Method)
PRODUCT NUMBER	DATE BOOKED	COUNTRY	CLEANING CODES
1411901	01/2024	Italy	WS

ADDITIONAL PRODUCT NOTES
Easy To Clean Finish, Passes 100,000 Martindale Tst, Indoor / Outdoor, 1,200 Hours Light Fastness, Ca Tb 117-2013, 100% Acrylic Backing, Exclusive Pattern