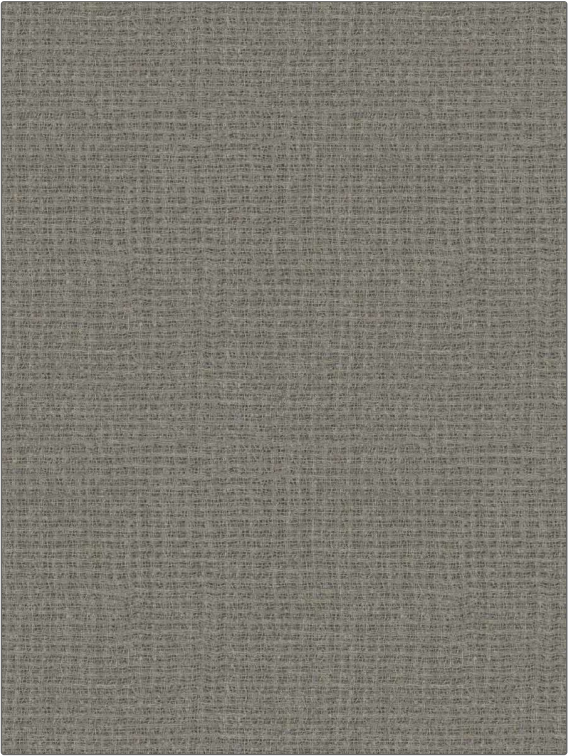


Fabric Product Details

PATTERN	Ambra
COLOR	Pinon
BRAND	APPLICATION
S. Harris	Fabric
USES	CATEGORIES
Drapery	Wide Width, Wool, Casements
BOOK	COLORS
Elements S24	Taupe / Tan, Metallic
DESIGN TYPES	RAILOADED
Solid, Contemporary / Modern	Railroaded



WIDTH	VERTICAL REPEAT	HORIZONTAL REPEAT	CONTENT
125.00 in (317.50 cm)	0.50 in (1.27 cm)	0.50 in (1.27 cm)	60% Wool, 23% Polyester, 8% Nylon, 7% Acrylic, 2% Rayon
BACKING	PRODUCT NUMBER	DATE BOOKED	COUNTRY
	1803302	10/2023	Turkey
CLEANING CODES			
S			

ADDITIONAL PRODUCT NOTES
Shown Railroaded, Exclusive Pattern