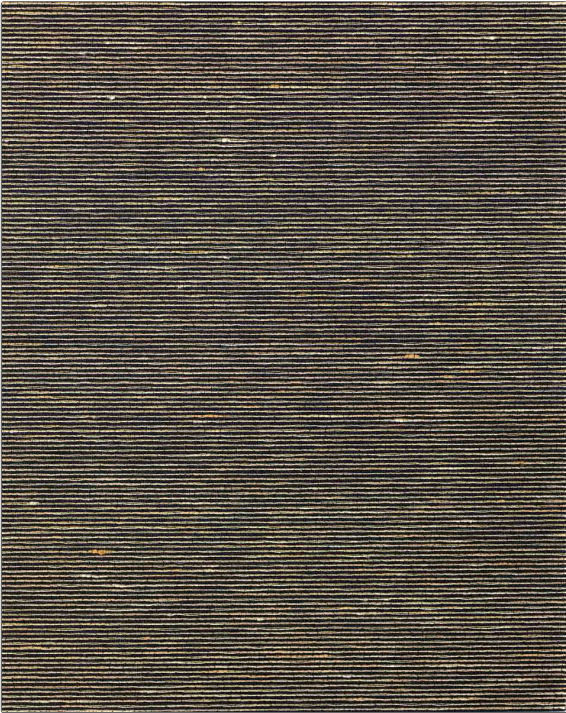


# Wallcovering Product Details

**PATTERN** Noor Plain WC  
**COLOR** Black Pepper



<b>BRAND</b>	<b>APPLICATION</b>
S. Harris	Wallcovering
<b>CATEGORIES</b>	<b>BOOK</b>
ASTM-E84, En 15102, String / Textile, Linen	Silk Wallcovering
<b>COLORS</b>	<b>DESIGN TYPES</b>
Black, Brown	Novelty, Solid, Texture Plain, Contemporary / Modern

<b>WIDTH</b>	<b>VERTICAL REPEAT</b>	<b>HORIZONTAL REPEAT</b>	<b>CONTENT</b>
43.00 in (109.22 cm)	0.00 in (0.00 cm)	0.00 in (0.00 cm)	Face: 58% Linen, 42% Silk, Backing: 70% Wood Pulp, 30% Recycled Polye
<b>BACKING</b>	<b>FIRE CODES</b>	<b>PRODUCT NUMBER</b>	<b>DATE BOOKED</b>
Strippable, Pretrimmed	Ce Mark Certified, Passes ASTM E-84 Class A Or 1, Passes EN15102 Class B-S1, Do	2005206	05/2024
<b>COUNTRY</b>			
Netherlands			

**ADDITIONAL PRODUCT NOTES**

Soil & Stain Repellent Finish, Pfas-Free, Strippable, Pretrimmed, Paste The Wall, Fsc Certified, Ce Mark Certified, Random Match, Gently Vacuum With Soft Brush, Passes EN15102 Class B-S1, Do, Eco / Environment Plus