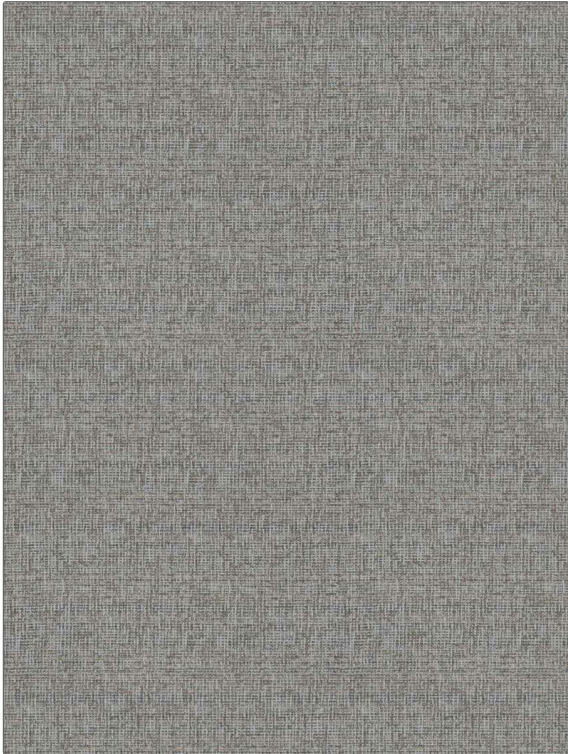


# Fabric Product Details

**PATTERN** Elysees  
**COLOR** Cascade

<b>BRAND</b>	<b>APPLICATION</b>
S. Harris	Fabric
<b>USES</b>	<b>CATEGORIES</b>
Bedding, Drapery, Multipurpose	Solids / Small Scale Patterns, Chenille, Eco / Environment Plus
<b>BOOK</b>	<b>COLORS</b>
Elements	Grey
<b>DESIGN TYPES</b>	<b>DIRECTION SHOWN</b>
Texture Plain	Up the Bolt



<b>WIDTH</b>	<b>VERTICAL REPEAT</b>	<b>HORIZONTAL REPEAT</b>	<b>CONTENT</b>
55.00 in (139.70 cm)	0.00 in (0.00 cm)	0.00 in (0.00 cm)	72% Recycled Poly, 28% Virgin Polyest
<b>BACKING</b>	<b>FIRE CODES</b>	<b>DOUBLE RUBS</b>	<b>PRODUCT NUMBER</b>
	UFAC Class I / NFPA 260	Exceeds 51,000 Double Rubs (Wyzenbeek Method)	2022703
<b>DATE BOOKED</b>	<b>COUNTRY</b>	<b>CLEANING CODES</b>	
01/2020	Germany	P	

**ADDITIONAL PRODUCT NOTES**

Organic / Sustainable, Passes 20,000 Martindale Tst, Oeko Tex Standard 100, Ca Tb 117-2013, Exclusive Pattern, Eco / Environment Plus