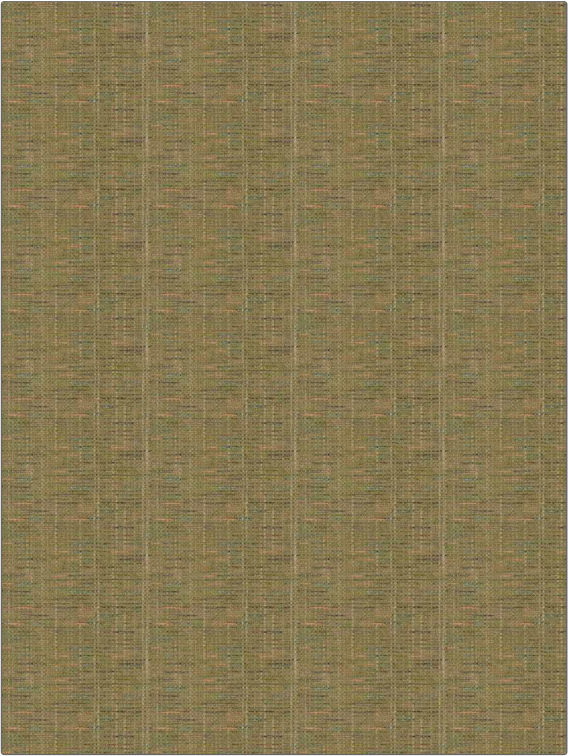


# Fabric Product Details

**PATTERN** Atlas Weave  
**COLOR** Gild

<b>BRAND</b>	<b>APPLICATION</b>
S. Harris	Fabric
<b>USES</b>	<b>CATEGORIES</b>
Bedding, Drapery, Multipurpose	Wovens, Chenille
<b>BOOK</b>	<b>COLORS</b>
Elements	Linen, Metallic, Gold, Multi-Color
<b>DESIGN TYPES</b>	<b>SCALE</b>
Check / Plaid, Texture Plain, Contemporary / Modern	Small
<b>DIRECTION SHOWN</b>	
Up the Bolt	



<b>WIDTH</b>	<b>VERTICAL REPEAT</b>	<b>HORIZONTAL REPEAT</b>	<b>CONTENT</b>
54.00 in (137.16 cm)	5.00 in (12.70 cm)	7.12 in (18.08 cm)	78% Viscose, 10% Polyester, 6% Linen, 6% Cotton
<b>BACKING</b>	<b>FIRE CODES</b>	<b>DOUBLE RUBS</b>	<b>PRODUCT NUMBER</b>
	UFAC Class I / NFPA 260	Exceeds 42,000 Double Rubs (Wyzenbeek Method)	2118001
<b>DATE BOOKED</b>	<b>COUNTRY</b>	<b>CLEANING CODES</b>	
01/2020	Italy	S	

**ADDITIONAL PRODUCT NOTES**

Passes 15,000 Martindale Tst, In Compliance With Ca Prop 65, Ca Tb 117-2013, Exclusive Pattern