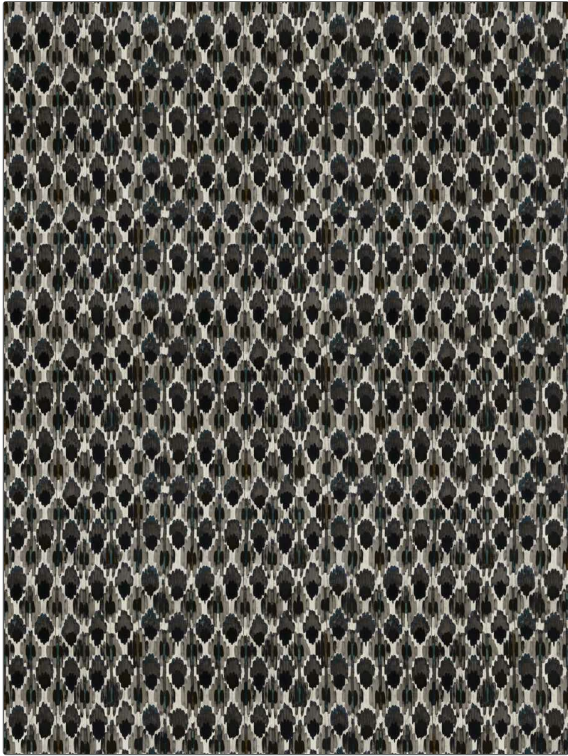


Fabric Product Details

PATTERN	Pasture Raised
COLOR	Midnight
BRAND	APPLICATION
S. Harris	Fabric
USES	CATEGORIES
Bedding, Drapery, Multipurpose	Velvet / Grospoint, Prints
BOOK	COLORS
Paradigm	Grey, Blue, Brown
DESIGN TYPES	SCALE
Global / Ethnic, Print Pattern, Contemporary / Modern, Abstract	Medium
DIRECTION SHOWN	
Up the Bolt	



WIDTH	VERTICAL REPEAT	HORIZONTAL REPEAT	CONTENT
54.00 in (137.16 cm)	26.37 in (66.98 cm)	18.00 in (45.72 cm)	88% Cotton, 12% Polyester
BACKING	FIRE CODES	DOUBLE RUBS	PRODUCT NUMBER
	UFAC Class I / NFPA 260	Exceeds 39,000 Double Rubs (Wyzenbeek Method)	2126702
DATE BOOKED	COUNTRY	CLEANING CODES	
03/2024	Austria	P	

ADDITIONAL PRODUCT NOTES
Passes 35,000 Martindale Tst, Ca Tb 117-2013, Mirrored Velvet, Exclusive Pattern