

# Fabric Product Details

**PATTERN** Pasture Raised  
**COLOR** 02

**BRAND**

S. Harris

**APPLICATION**

Fabric

**USES**

Bedding, Drapery,  
Multipurpose

**CATEGORIES**

Velvet / Grospoint, Prints

**COLORS**

Grey, Blue, Brown

**DESIGN TYPES**

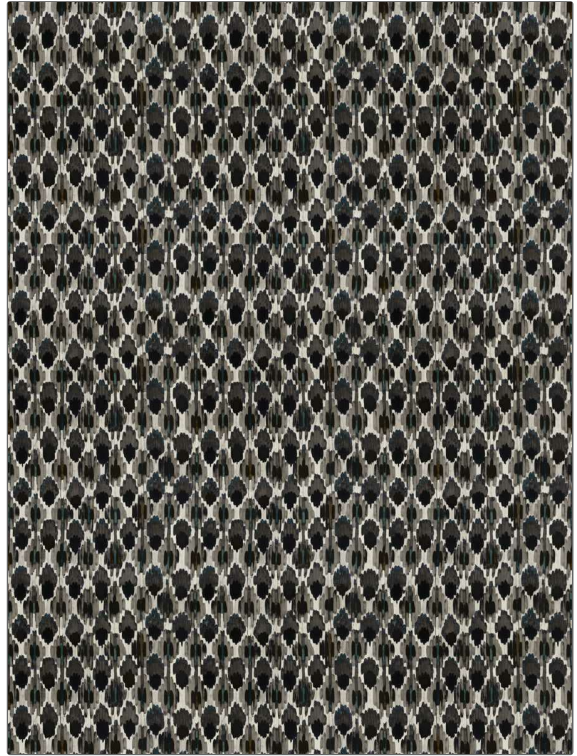
Global / Ethnic, Print  
Pattern, Contemporary /  
Modern, Abstract

**SCALE**

Medium

**DIRECTION SHOWN**

Up the Bolt



**WIDTH**

54.00 in (137.16 cm)

**VERTICAL REPEAT**

26.37 in (66.98 cm)

**HORIZONTAL REPEAT**

18.00 in (45.72 cm)

**CONTENT**

88% Cotton, 12% Polyester

**BACKING**

**FIRE CODES**

UFAC Class I / NFPA 260

**DOUBLE RUBS**

Exceeds 39,000 Double  
Rubs (Wyzenbeek Method)

**PRODUCT NUMBER**

2126802

**COUNTRY**

Austria

**CLEANING CODES**

P

**ADDITIONAL PRODUCT NOTES**

Passes 35,000 Martindale Tst, Ca Tb 117-2013, Mirrored Velvet, Exclusive Pattern