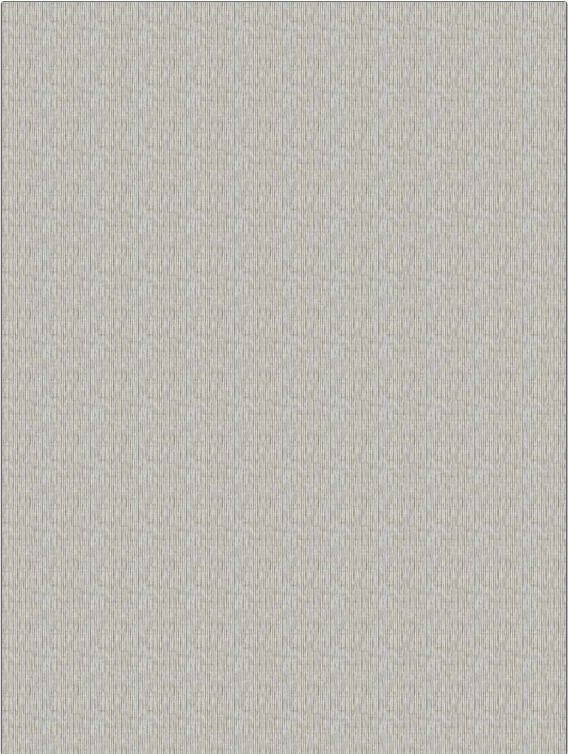


# Fabric Product Details

**PATTERN** Miley Velvet  
**COLOR** Sand

<b>BRAND</b>	<b>APPLICATION</b>
S. Harris	Fabric
<b>USES</b>	<b>CATEGORIES</b>
Upholstery	Velvet / Grospoint
<b>BOOK</b>	<b>COLORS</b>
Elements By Diane Keaton	Beige
<b>DESIGN TYPES</b>	<b>SCALE</b>
Stripes, Contemporary / Modern	Small
<b>DIRECTION SHOWN</b>	
Up the Bolt	



<b>WIDTH</b>	<b>VERTICAL REPEAT</b>	<b>HORIZONTAL REPEAT</b>	<b>CONTENT</b>
54.00 in (137.16 cm)	3.00 in (7.62 cm)	2.25 in (5.72 cm)	58% Viscose, 29% Cotton, 13% Polyester
<b>BACKING</b>	<b>FIRE CODES</b>	<b>DOUBLE RUBS</b>	<b>PRODUCT NUMBER</b>
100% Acrylic Backing	UFAC Class I / NFPA 260	Exceeds 24,000 Double Rubs (Wyzenbeek Method)	2127601
<b>DATE BOOKED</b>	<b>COUNTRY</b>	<b>CLEANING CODES</b>	
11/2021	Italy	S	

**ADDITIONAL PRODUCT NOTES**  
 Passes 20,000 Martindale Tst, Ca Tb 117-2013, Mirrored Velvet, 100% Acrylic Backing, Exclusive Pattern