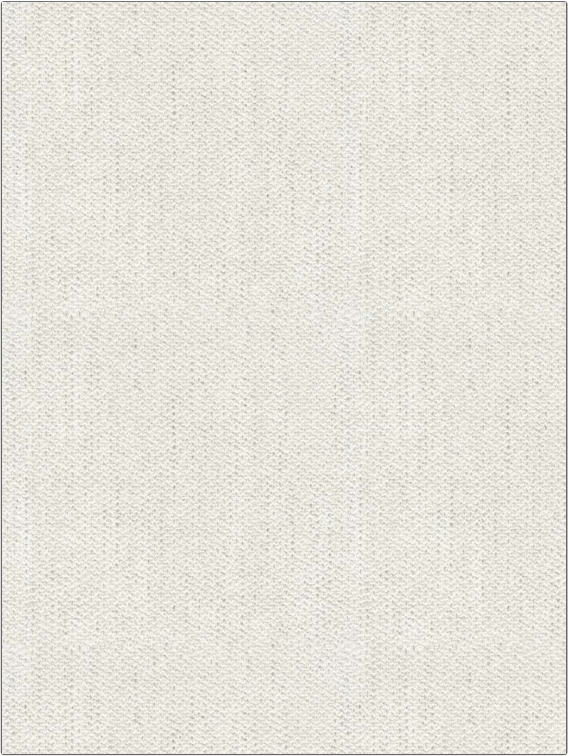


Fabric Product Details

|         |               |
|---------|---------------|
| PATTERN | Fully Present |
| COLOR   | Cloud         |

|                   |   |
|-------------------|---|
| BRAND             | APPLICATION                             |
| S. Harris         | Fabric                                  |
| USES              | CATEGORIES                              |
| Multipurpose      | Wool, Wovens                            |
| COLORS            | DESIGN TYPES                            |
| Off White / Ivory | Texture Plain,<br>Contemporary / Modern |
| RAILROADED        |   |
| Not Railroaded    |   |



|                       |                         |  |   |
|-----------------------|-------------------------|--|---|
| WIDTH                 | VERTICAL REPEAT         | HORIZONTAL REPEAT                                | CONTENT   |
| 54.00 in (137.16 cm)  | 0.00 in (0.00 cm)       | 0.00 in (0.00 cm)                                | 34% Acrylic, 24% Cotton,<br>14% Wool, 12% Viscose,<br>12% Polyester, 4% Linen |
| BACKING               | FIRE CODES              | DOUBLE RUBS                                      | PRODUCT NUMBER  |
| Light Acrylic Backing | UFAC Class I / NFPA 260 | Exceeds 65,000 Double<br>Rubs (Wyzenbeek Method) | 3003705   |
| COUNTRY               | CLEANING CODES          |  |   |
| Italy                 | S                       |  |   |

|  |
|--|
| ADDITIONAL PRODUCT NOTES                                 |
| Ca Tb 117-2013, Light Acrylic Backing, Exclusive Pattern |