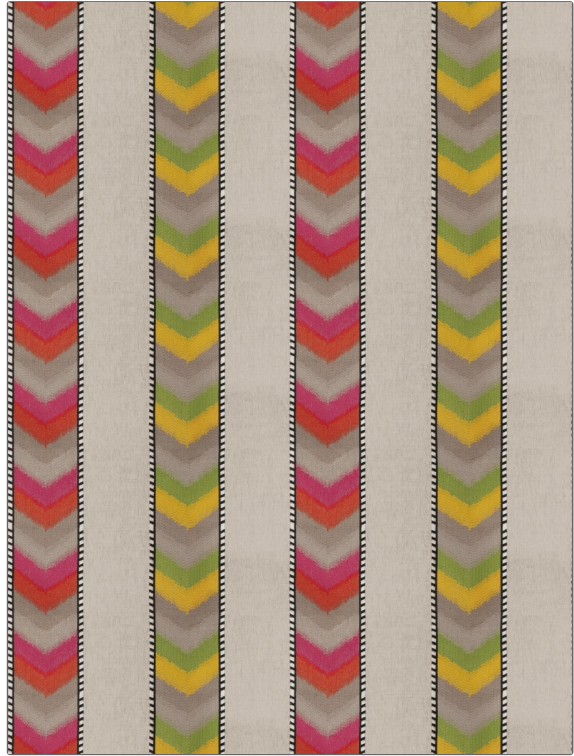


Fabric Product Details

PATTERN Bahia
COLOR 01

BRAND	APPLICATION
S. Harris	Fabric
USES	CATEGORIES
Drapery	Wovens, Crewels / Embroideries, Linen
COLORS	DESIGN TYPES
Green	Embroidery, Stripes
SCALE	RAILROADED
Medium	Not Railroaded



WIDTH	VERTICAL REPEAT	HORIZONTAL REPEAT	CONTENT
58.00 in (147.32 cm)	7.50 in (19.05 cm)	25.00 in (63.50 cm)	55% Linen, 45% Cotton, Embroidery: 100% Viscose
BACKING	PRODUCT NUMBER	COUNTRY	CLEANING CODES
	4999101	India	S

ADDITIONAL PRODUCT NOTES

Exclusive Pattern, Embroidered Textiles Are Not, Guaranteed For Precise Color, Matching And Colorfastness., Color Placement Of Embroidery, May Vary. All Measurements, Quoted For Repeats Are, Approximate.