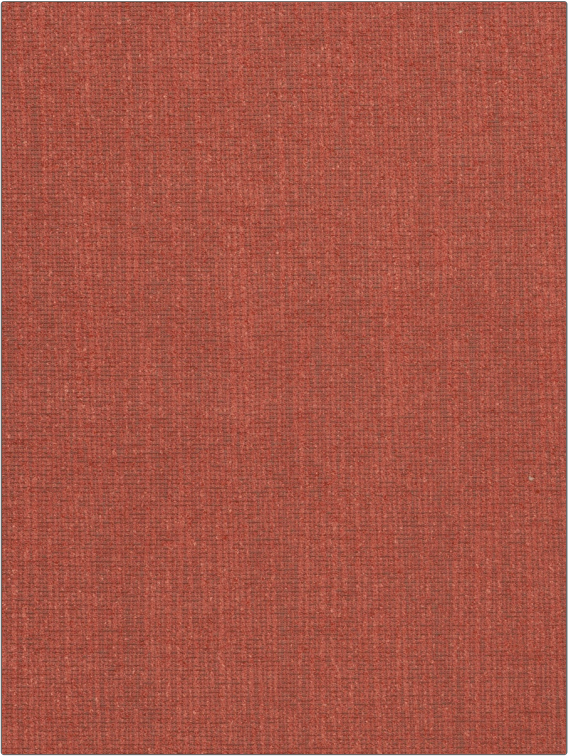


Fabric Product Details

PATTERN	Quadrant
COLOR	Melonpeel

BRAND	APPLICATION
S. Harris	Fabric
USES	CATEGORIES
Upholstery	Solids / Small Scale Patterns
BOOK	COLORS
Elements	Coral / Peach
DESIGN TYPES	RAILROADED
Solid, Contemporary / Modern	Not Railroaded



WIDTH	VERTICAL REPEAT	HORIZONTAL REPEAT	CONTENT
57.00 in (144.78 cm)	0.00 in (0.00 cm)	0.00 in (0.00 cm)	82% Polyester, 18% Acrylic
BACKING	FIRE CODES	DOUBLE RUBS	PRODUCT NUMBER
	UFAC Class I / NFPA 260	Exceeds 50,000 Double Rubs (Wyzenbeek Method)	5468004
DATE BOOKED	COUNTRY	CLEANING CODES	
01/2020	Germany	S, BLEACH CLEANABLE	

ADDITIONAL PRODUCT NOTES
Q2, Indoor / Covered Outdoor, Ca Tb 117-2013, Bleach Cleanable, Exclusive Pattern