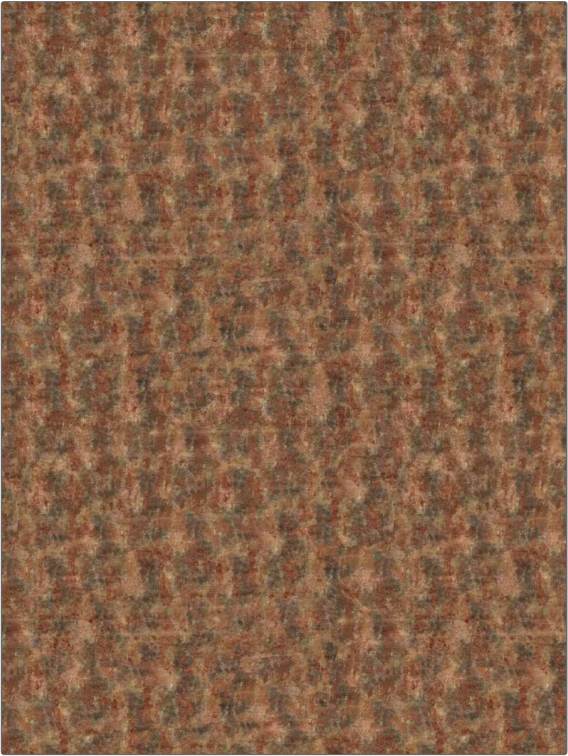


Fabric Product Details

PATTERN Leavitt
COLOR Poppy



BRAND	APPLICATION
S. Harris	Fabric
USES	CATEGORIES
Upholstery	Velvet / Grospoint
BOOK	COLORS
Design En Rogue Artistry	Metallic, Pink
DESIGN TYPES	RAILROADED
Texture Plain, Contemporary / Modern	Not Railroaded

WIDTH	VERTICAL REPEAT	HORIZONTAL REPEAT	CONTENT
57.00 in (144.78 cm)	0.00 in (0.00 cm)	0.00 in (0.00 cm)	Pile: 100% Viscose, Base: 80% Cotton, 13% Polyester, 7% Viscose
BACKING	FIRE CODES	DOUBLE RUBS	PRODUCT NUMBER
	UFAC Class I / NFPA 260	Exceeds 100,000 Double Rubs (Wyzenbeek Method)	6050204
DATE BOOKED	COUNTRY	CLEANING CODES	
06/2021	Italy	S	

ADDITIONAL PRODUCT NOTES

Exclusive Pattern