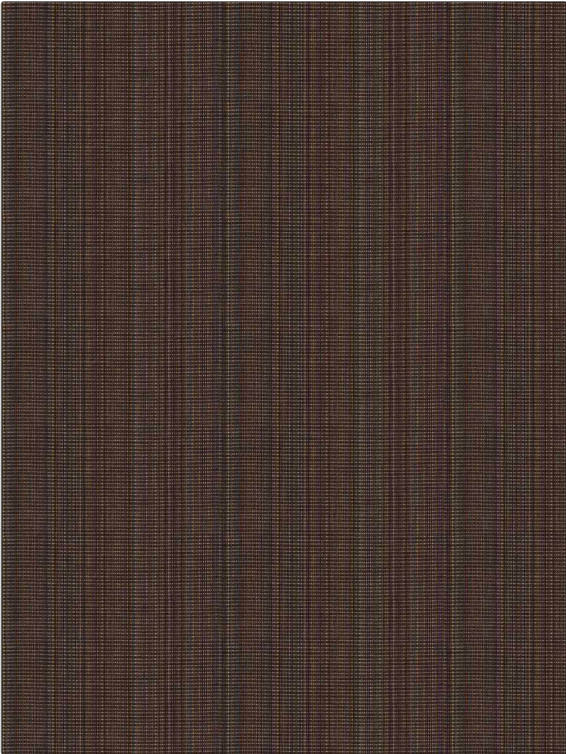


# Fabric Product Details

**PATTERN** Riri Texture  
**COLOR** Violet



<b>BRAND</b>	<b>APPLICATION</b>
S. Harris	Fabric
<b>USES</b>	<b>CATEGORIES</b>
Upholstery	Wool, Wovens
<b>BOOK</b>	<b>COLORS</b>
Elements	Lavender / Purple
<b>DESIGN TYPES</b>	<b>RAILROADED</b>
Small Scale Woven, Stripes, Contemporary / Modern	Not Railroaded

<b>WIDTH</b>	<b>VERTICAL REPEAT</b>	<b>HORIZONTAL REPEAT</b>	<b>CONTENT</b>
52.00 in (132.08 cm)	0.00 in (0.00 cm)	0.00 in (0.00 cm)	89% Wool, 8% Cotton, 3% Nylon
<b>BACKING</b>	<b>FIRE CODES</b>	<b>DOUBLE RUBS</b>	<b>PRODUCT NUMBER</b>
	UFAC Class I / NFPA 260	Exceeds 25,000 Double Rubs (Wyzenbeek Method)	6153301
<b>DATE BOOKED</b>	<b>COUNTRY</b>	<b>CLEANING CODES</b>	
01/2020	USA	S	

**ADDITIONAL PRODUCT NOTES**

Ca Tb 117-2013, Exclusive Pattern