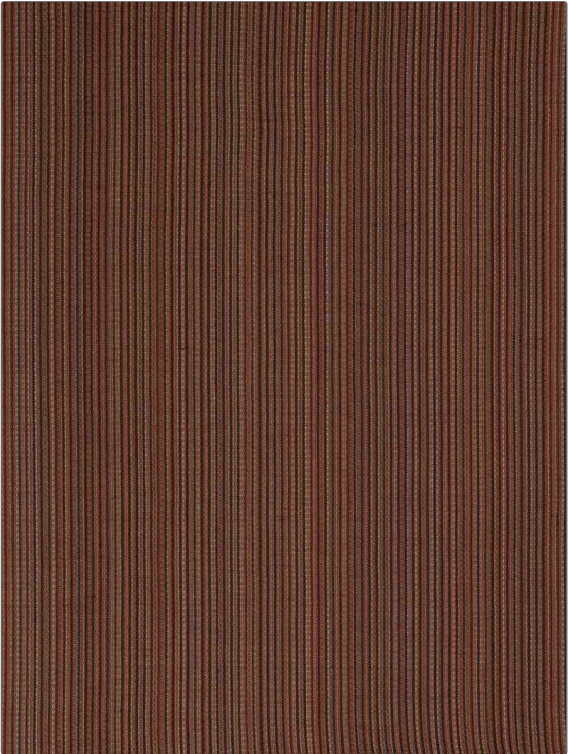


Fabric Product Details

PATTERN Riri Texture
COLOR Peaches

BRAND	APPLICATION
S. Harris	Fabric
USES	CATEGORIES
Upholstery	Wool, Wovens
BOOK	COLORS
Elements	Orange / Spice, Coral / Peach
DESIGN TYPES	RAILROADED
Small Scale Woven, Stripes, Contemporary / Modern	Not Railroaded



WIDTH	VERTICAL REPEAT	HORIZONTAL REPEAT	CONTENT
52.00 in (132.08 cm)	0.00 in (0.00 cm)	0.00 in (0.00 cm)	89% Wool, 8% Cotton, 3% Nylon
BACKING	FIRE CODES	DOUBLE RUBS	PRODUCT NUMBER
	UFAC Class I / NFPA 260	Exceeds 25,000 Double Rubs (Wyzenbeek Method)	6153302
DATE BOOKED	COUNTRY	CLEANING CODES	
01/2020	USA	S	

ADDITIONAL PRODUCT NOTES

Ca Tb 117-2013, Exclusive Pattern