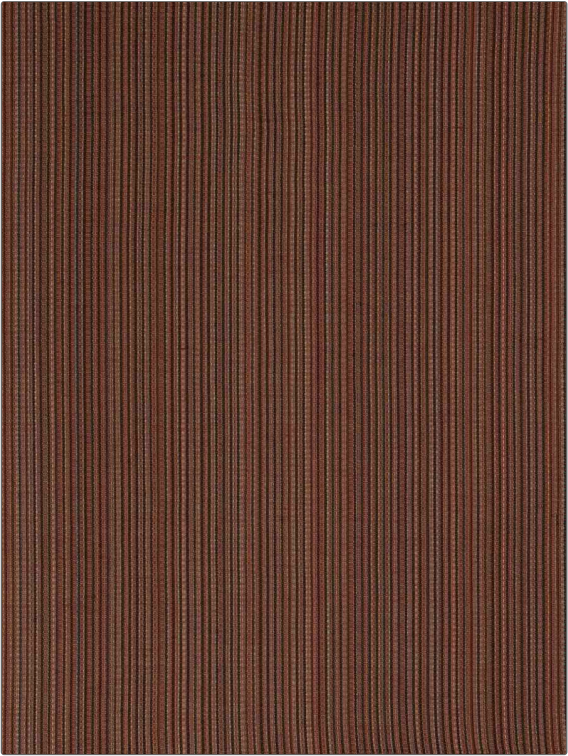


Fabric Product Details

PATTERN	Riri Texture
COLOR	02

BRAND	APPLICATION
S. Harris	Fabric
USES	CATEGORIES
Upholstery	Wool, Wovens
COLORS	DESIGN TYPES
Orange / Spice, Coral / Peach	Small Scale Woven, Stripes, Contemporary / Modern
RAILROADED	
Not Railroaded	



WIDTH	VERTICAL REPEAT	HORIZONTAL REPEAT	CONTENT
52.00 in (132.08 cm)	0.00 in (0.00 cm)	0.00 in (0.00 cm)	89% Wool, 8% Cotton, 3% Nylon
BACKING	FIRE CODES	DOUBLE RUBS	PRODUCT NUMBER
	UFAC Class I / NFPA 260	Exceeds 25,000 Double Rubs (Wyzenbeek Method)	6153402
COUNTRY	CLEANING CODES		
USA	S		

ADDITIONAL PRODUCT NOTES
Ca Tb 117-2013, Exclusive Pattern