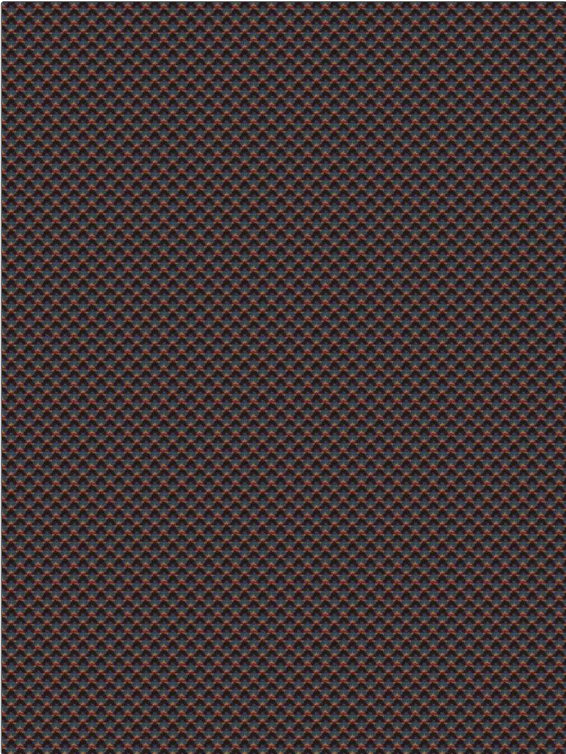


# Fabric Product Details

**PATTERN** Sontag  
**COLOR** Berry Jewel

<b>BRAND</b>	<b>APPLICATION</b>
S. Harris	Fabric
<b>USES</b>	<b>CATEGORIES</b>
Upholstery	Wovens
<b>BOOK</b>	<b>COLORS</b>
Design En Rogue Artistry	Blue, Gold, Burgundy
<b>DESIGN TYPES</b>	<b>SCALE</b>
Geometric, Small Scale Woven, Contemporary / Modern	Small
<b>RAILROADED</b>	
Not Railroaded	



<b>WIDTH</b>	<b>VERTICAL REPEAT</b>	<b>HORIZONTAL REPEAT</b>	<b>CONTENT</b>
55.00 in (139.70 cm)	0.85 in (2.16 cm)	0.86 in (2.18 cm)	39% Viscose, 25% Acrylic, 18% Polyester, 14% Cotton, 4% Linen
<b>BACKING</b>	<b>FIRE CODES</b>	<b>DOUBLE RUBS</b>	<b>PRODUCT NUMBER</b>
	UFAC Class I / NFPA 260	Exceeds 100,000 Double Rubs (Wyzenbeek Method)	6348701
<b>DATE BOOKED</b>	<b>COUNTRY</b>	<b>CLEANING CODES</b>	
06/2021	Italy	S	

**ADDITIONAL PRODUCT NOTES**

Ca Tb 117-2013, Exclusive Pattern