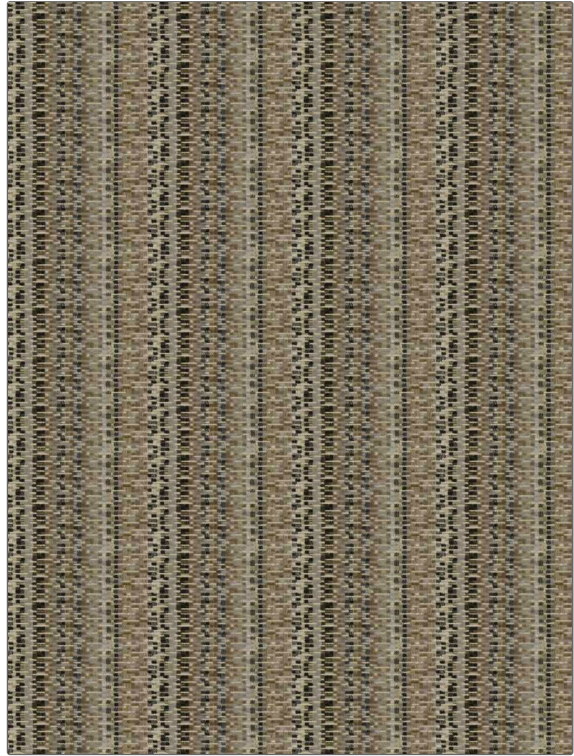


# Fabric Product Details

**PATTERN** Pixel Velvet  
**COLOR** Espresso Bean

<b>BRAND</b>	<b>APPLICATION</b>
S. Harris	Fabric
<b>USES</b>	<b>CATEGORIES</b>
Bedding, Multipurpose, Upholstery	Velvet / Grospoint
<b>BOOK</b>	<b>COLORS</b>
Design En Rogue Architecture	Brown, Beige, Taupe / Tan
<b>DESIGN TYPES</b>	<b>SCALE</b>
Contemporary / Modern, Abstract	Small
<b>RAILROADED</b>	
Not Railroaded	



<b>WIDTH</b>	<b>VERTICAL REPEAT</b>	<b>HORIZONTAL REPEAT</b>	<b>CONTENT</b>
55.00 in (139.70 cm)	4.72 in (11.99 cm)	6.89 in (17.50 cm)	65% Viscose, 35% Polyester
<b>BACKING</b>	<b>FIRE CODES</b>	<b>DOUBLE RUBS</b>	<b>PRODUCT NUMBER</b>
	UFAC Class I / NFPA 260	Exceeds 40,000 Double Rubs (Wyzenbeek Method)	6669702
<b>DATE BOOKED</b>	<b>COUNTRY</b>	<b>CLEANING CODES</b>	
06/2021	Italy	S	

**ADDITIONAL PRODUCT NOTES**  
 Ca Tb 117-2013, Exclusive Pattern