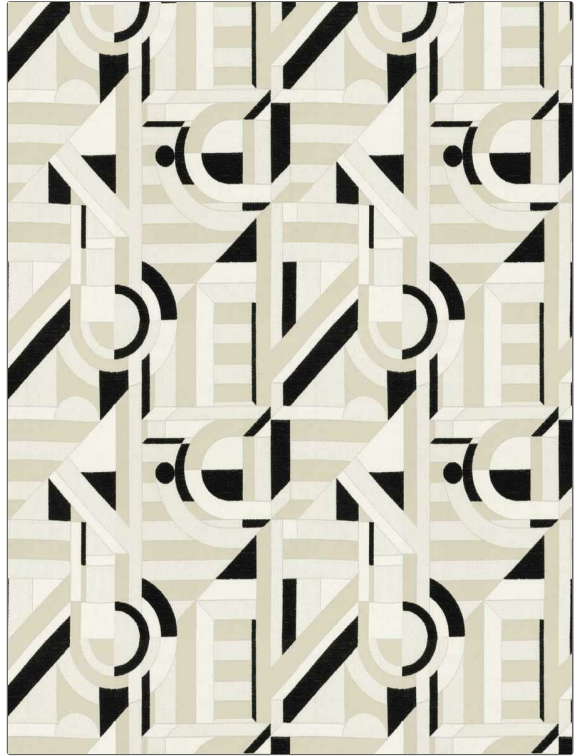


# Fabric Product Details

<b>PATTERN</b>	<b>Figures</b>
<b>COLOR</b>	<b>Akoya Pearl</b>
<b>BRAND</b>	<b>APPLICATION</b>
<b>S. Harris</b>	<b>Fabric</b>
<b>USES</b>	<b>CATEGORIES</b>
<b>Bedding, Multipurpose, Upholstery</b>	<b>Wovens</b>
<b>BOOK</b>	<b>COLORS</b>
<b>Design En Rogue Artistry</b>	<b>Black, Beige, Off White / Ivory</b>
<b>DESIGN TYPES</b>	<b>SCALE</b>
<b>Geometric, Contemporary / Modern, Abstract</b>	<b>Medium</b>
<b>RAILROADED</b>	
<b>Not Railroaded</b>	



<b>WIDTH</b>	<b>VERTICAL REPEAT</b>	<b>HORIZONTAL REPEAT</b>	<b>CONTENT</b>
<b>55.00 in (139.70 cm)</b>	<b>15.17 in (38.53 cm)</b>	<b>13.78 in (35.00 cm)</b>	<b>38% Cotton, 27% Acrylic, 26% Viscose, 9% Nylon</b>
<b>BACKING</b>	<b>FIRE CODES</b>	<b>DOUBLE RUBS</b>	<b>PRODUCT NUMBER</b>
	<b>UFAC Class I / NFPA 260</b>	<b>Exceeds 15,000 Double Rubs (Wyzenbeek Method)</b>	<b>6670601</b>
<b>DATE BOOKED</b>	<b>COUNTRY</b>	<b>CLEANING CODES</b>	
<b>06/2021</b>	<b>Italy</b>	<b>S</b>	

<b>ADDITIONAL PRODUCT NOTES</b>
<b>Passes 20,000 Martindale Tst, Exclusive Pattern</b>