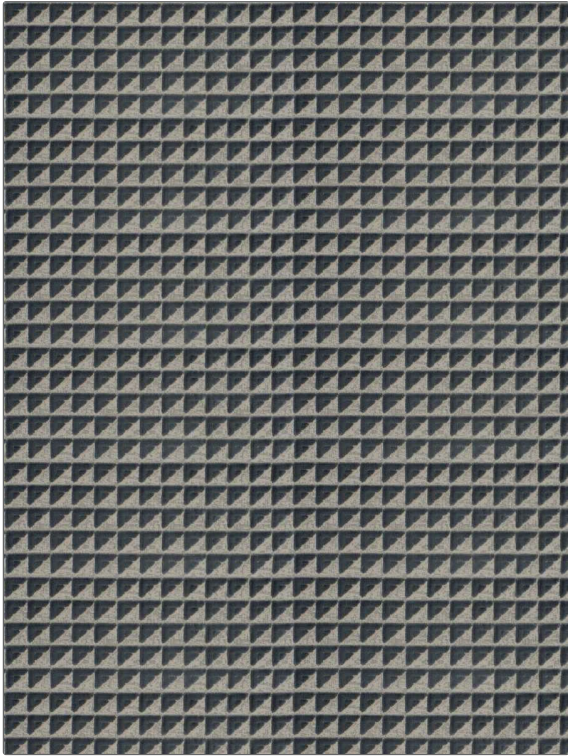


Fabric Product Details

PATTERN **Nouvel**
COLOR **Tamarindo**

BRAND	APPLICATION
S. Harris	Fabric
USES	CATEGORIES
Bedding, Multipurpose, Upholstery	Velvet / Grospoint
BOOK	COLORS
Design En Rogue Architecture	Blue, Navy
DESIGN TYPES	SCALE
Geometric, Contemporary / Modern	Small
RAILROADED	
Not Railroaded	



WIDTH	VERTICAL REPEAT	HORIZONTAL REPEAT	CONTENT
55.00 in (139.70 cm)	5.51 in (14.00 cm)	13.78 in (35.00 cm)	70% Viscose, 21% Polyester, 9% Cotton
BACKING	FIRE CODES	DOUBLE RUBS	PRODUCT NUMBER
	UFAC Class I / NFPA 260	Exceeds 40,000 Double Rubs (Wyzenbeek Method)	6672404
DATE BOOKED	COUNTRY	CLEANING CODES	
06/2021	Italy	S	

ADDITIONAL PRODUCT NOTES
Passes 45,000 Martindale Tst, Exclusive Pattern