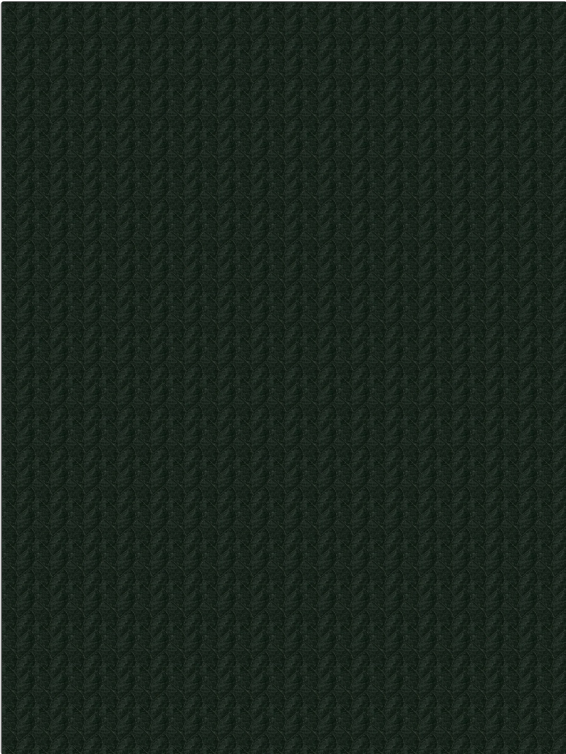


# Fabric Product Details

**PATTERN**    **Craft Velour**  
**COLOR**      **Celine Green**

|                       |                               |
|-----------------------|-------------------------------|
| <b>BRAND</b>          | <b>APPLICATION</b>            |
| S. Harris             | Fabric                        |
| <b>USES</b>           | <b>CATEGORIES</b>             |
| Bedding               | Matelasse, Velvet / Grospoint |
| <b>BOOK</b>           | <b>COLORS</b>                 |
| Spring 2016           | Light Green                   |
| <b>DESIGN TYPES</b>   | <b>SCALE</b>                  |
| Contemporary / Modern | Small                         |
| <b>RAILROADED</b>     |                               |
| Not Railroaded        |                               |



|                      |                         |   |   |
|----------------------|-------------------------|---|---|
| <b>WIDTH</b>         | <b>VERTICAL REPEAT</b>  | <b>HORIZONTAL REPEAT</b>                      | <b>CONTENT</b>                                      |
| 49.00 in (124.46 cm) | 1.96 in (4.98 cm)       | 2.95 in (7.49 cm)                             | Pile: 100% Viscose, Base: 70% Cotton, 30% Polyester |
| <b>BACKING</b>       | <b>FIRE CODES</b>       | <b>DOUBLE RUBS</b>                            | <b>PRODUCT NUMBER</b>                               |
|                      | UFAC Class I / NFPA 260 | Exceeds 40,000 Double Rubs (Wyzenbeek Method) | 6886804   |
| <b>DATE BOOKED</b>   | <b>COUNTRY</b>          | <b>CLEANING CODES</b>                         |   |
| 01/2016              | Italy                   | S   |   |

**ADDITIONAL PRODUCT NOTES**

Ca Tb 117-2013, Exclusive Pattern