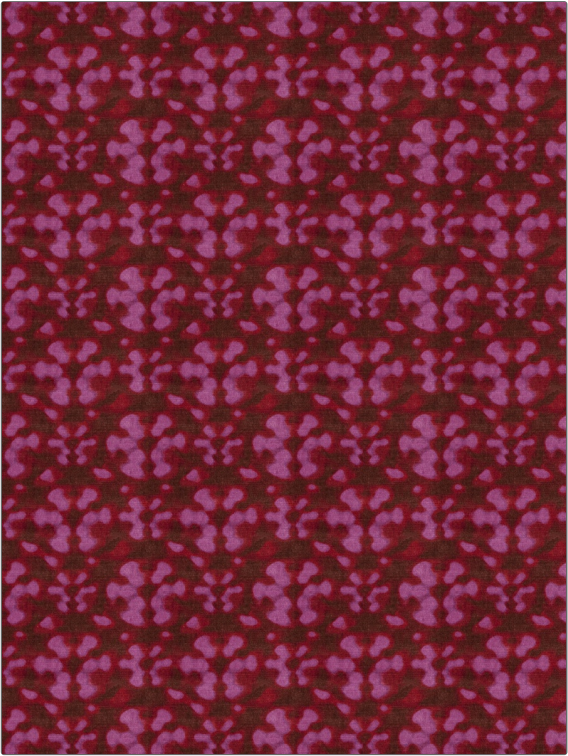


Fabric Product Details

PATTERN Sol
COLOR Pink Lips

BRAND	APPLICATION
S. Harris	Fabric
USES	CATEGORIES
Upholstery	Velvet / Grospoint, Prints
BOOK	COLORS
Spring 2016	Pink
DESIGN TYPES	RAILROADED
Global / Ethnic, Print Pattern, Contemporary / Modern	Not Railed



WIDTH	VERTICAL REPEAT	HORIZONTAL REPEAT	CONTENT
53.00 in (134.62 cm)	7.90 in (20.07 cm)	7.00 in (17.78 cm)	60% Viscose, 30% Cotton, 10% Polyester
BACKING	FIRE CODES	DOUBLE RUBS	PRODUCT NUMBER
	UFAC Class I / NFPA 260	Exceeds 100,000 Double Rubs (Wyzenbeek Method)	6903501
DATE BOOKED	COUNTRY	CLEANING CODES	
01/2016	Italy	S	

ADDITIONAL PRODUCT NOTES

Ca Tb 117-2013, Exclusive Pattern