

Fabric Product Details

PATTERN **Plaid Men**
COLOR **Bathhouse**

BRAND

S. Harris

APPLICATION

Fabric

CATEGORIES

Wovens

BOOK

Q2 Performance

COLORS

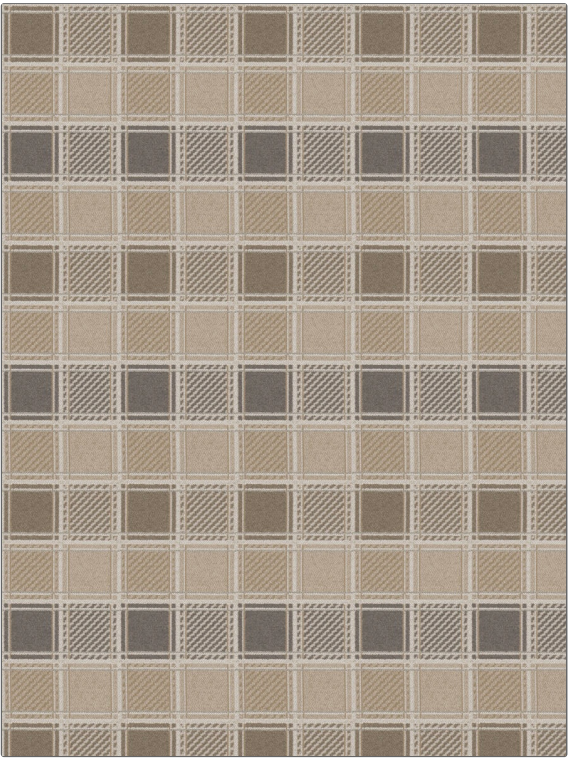
Black, Linen

DESIGN TYPES

Check / Plaid,
Contemporary / Modern

RAILOADED

Not Railroaded



WIDTH

56.00 in (142.24 cm)

VERTICAL REPEAT

11.70 in (29.72 cm)

HORIZONTAL REPEAT

5.60 in (14.22 cm)

CONTENT

100% Polyester

BACKING

FIRE CODES

UFAC Class I / NFPA 260

DOUBLE RUBS

Exceeds 75,000 Double
Rubs (Wyzenbeek Method)

PRODUCT NUMBER

7351905

DATE BOOKED

04/2019

COUNTRY

Germany

CLEANING CODES

BLEACH CLEANABLE

ADDITIONAL PRODUCT NOTES

Q2, Passes 20,000 Martindale Tst, Indoor / Covered Outdoor, Ca Tb 117-2013, Bleach Cleanable, Exclusive Pattern