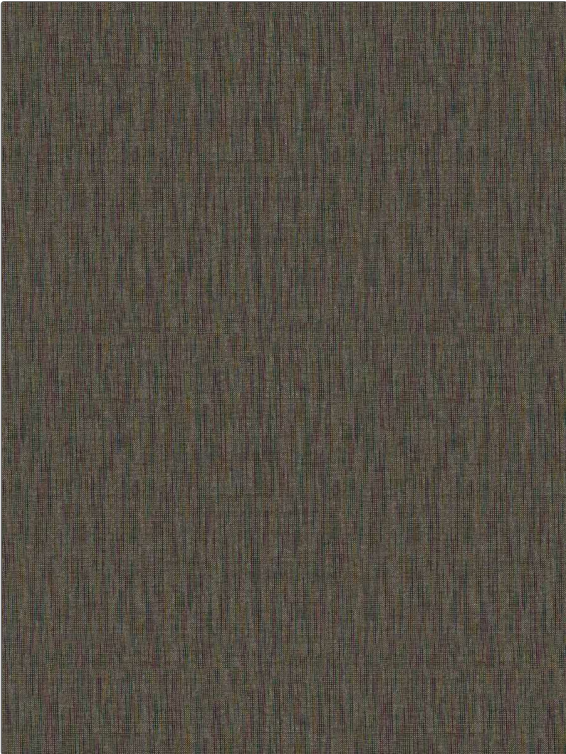


Fabric Product Details

PATTERN Titan Textile
COLOR Festival

BRAND	APPLICATION
S. Harris	Fabric
CATEGORIES	COLORS
Wovens, Solids / Small Scale Patterns	Lavender / Purple, Aqua / Teal
DESIGN TYPES	RAILROADED
Texture Plain, Contemporary / Modern	Railroaded



WIDTH	VERTICAL REPEAT	HORIZONTAL REPEAT	CONTENT
55.00 in (139.70 cm)	0.00 in (0.00 cm)	0.00 in (0.00 cm)	57% Polyester, 21% Polyacrylic 14% Cotton 8% Other
BACKING	FIRE CODES	DOUBLE RUBS	PRODUCT NUMBER
	UFAC Class I / NFPA 260	Exceeds 100,000 Double Rubs (Wyzenbeek Method)	7353104
COUNTRY	CLEANING CODES		
Germany	BLEACH CLEANABLE		

ADDITIONAL PRODUCT NOTES

Passes 20,000 Martindale Tst, Ca Tb 117-2013, Shown Railroaded, Bleach Cleanable