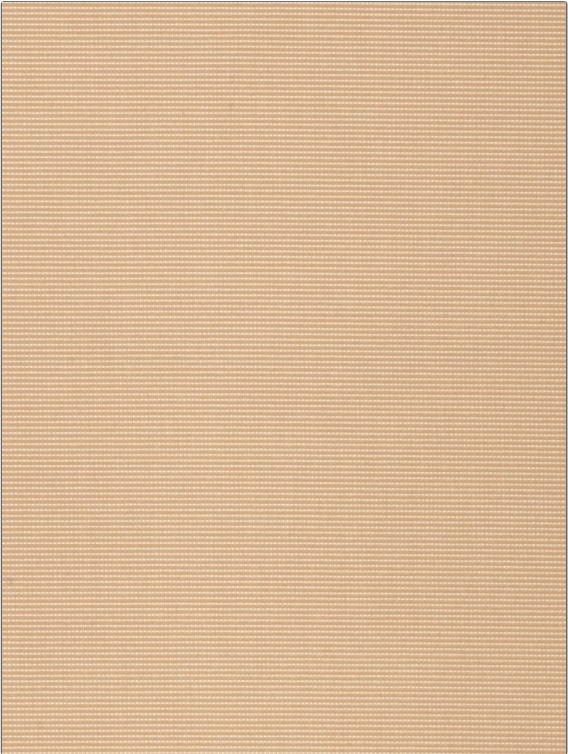


Fabric Product Details

PATTERN **Comfort Cord**
COLOR **Ivory Wash**

BRAND	APPLICATION
S. Harris	Fabric
CATEGORIES	BOOK
Velvet / Grospoint, Wovens	Elements
COLORS	DESIGN TYPES
Off White / Ivory	Texture Plain, Contemporary / Modern
RAILROADED	
Not Railed	



WIDTH	VERTICAL REPEAT	HORIZONTAL REPEAT	CONTENT
55.00 in (139.70 cm)	0.12 in (0.30 cm)	0.00 in (0.00 cm)	58% Acrylic 42% Polyester
BACKING	FIRE CODES	DOUBLE RUBS	PRODUCT NUMBER
	UFAC Class I / NFPA 260	Exceeds 85,000 Double Rubs (Wyzenbeek Method)	7353409
DATE BOOKED	COUNTRY	CLEANING CODES	
01/2020	Germany	BLEACH CLEANABLE	

ADDITIONAL PRODUCT NOTES

Q2, Passes 50,000 Martindale Tst, Indoor / Covered Outdoor, Ca Tb 117-2013, Bleach Cleanable, Exclusive Pattern