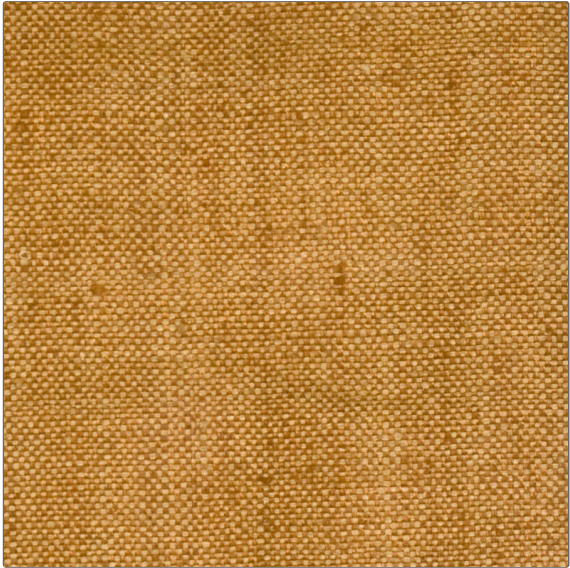


# Fabric Product Details

**PATTERN** Marumi  
**COLOR** Adobe



<b>BRAND</b>	<b>APPLICATION</b>
S. Harris	Fabric
<b>USES</b>	<b>CATEGORIES</b>
Bedding, Drapery, Multipurpose, Upholstery	Silk, Wovens, Solids / Small Scale Patterns
<b>COLORS</b>	<b>DESIGN TYPES</b>
Red	Solid, Texture Plain
<b>SCALE</b>	<b>RAILROADED</b>
Small	Not Railroaded

<b>WIDTH</b>	<b>VERTICAL REPEAT</b>	<b>HORIZONTAL REPEAT</b>	<b>CONTENT</b>
54.00 in (137.16 cm)	0.00 in (0.00 cm)	0.00 in (0.00 cm)	100% Silk
<b>BACKING</b>	<b>FIRE CODES</b>	<b>DOUBLE RUBS</b>	<b>PRODUCT NUMBER</b>
	UFAC Class I, Passes NFPA 260	Exceeds 18,000 Double Rubs (Wyzenbeek Method)	8229106
<b>COUNTRY</b>	<b>CLEANING CODES</b>		
India	S		

**ADDITIONAL PRODUCT NOTES**

Exclusive Pattern, Silks Are Not, Guaranteed Against Fading Or, For Precise Color Matching,, Colorfastness And Durability.